

**DNK**  
**DYNEKE**

DESDE 1963 VISTIENDO A LOS PROFESIONALES  
SINCE 1963 DRESSING PROFESSIONALS

CATÁLOGO GENERAL / GENERAL CATALOGUE  
2018



## EDITORIAL

Los grandes Maestros de la moda, han definido la pasión que sienten por sus creaciones con frases legendarias como éstas:

“No diseñamos ropa, diseñamos sueños”.  
—Ralph Lauren

“Hazlo simple, pero significativo”.  
—Don Draper

“La diferencia entre estilo y moda está en la calidad”. —Giorgio Armani

Aportamos entusiasmo en cada una de nuestras prendas, haciendo que el cliente se sienta cómodo y elegante. Con un continuo estudio de mercado y la profesionalidad de nuestro equipo, el departamento de I+D diseña las mejores propuestas para los diferentes sectores.

En Dyneke queremos ofrecer, a través de nuestras colecciones, el respeto a la uniformidad y los valores de todo un equipo de profesionales, cuya misión es, brindarles a través de nuestros productos: imagen, diseño y calidad.

Esta es nuestra carta de presentación.

## EDITORIAL

The great fashion masters have defined the passion they feel for their creations with legendary phrases like these:

“I don't design clothes, I design dreams.”  
—Ralph Lauren

“Do it simple, but significant.”  
—Don Draper

“The difference between style and fashion is in quality.” —Giorgio Armani

We make our garments with thrill, getting the customer feels comfortable and elegant. With a continuous market study and the professionalism of our team, the R & D department designs the best proposals for the different sectors.

Dyneke wants offer you, through our collections, respect for the uniformity and values of all the professional team whose mission is provide you through our products: image, design and quality.

This is our cover letter.

En Dyneke nos gusta lo que hacemos y nos comprometemos cada día en el trabajo bien hecho. Nuestros valores se basan en estos pilares fundamentales:

---

#### **CALIDAD**

Estamos convencidos de que hay que ofrecer la mejor calidad y el mejor servicio posible a nuestros clientes. Tratamos que cada pieza se adapte al máximo a las necesidades de cada sector profesional centrándonos en los criterios adquiridos de los muchos profesionales que utilizan nuestro vestuario.

Utilizamos las materias primas de primera calidad y nuestros procesos de producción cumplen las máximas exigencias. La satisfacción de nuestros clientes es fundamental para nosotros.

#### **TRABAJO EN EQUIPO**

La larga trayectoria de la empresa, hace que actualmente contemos con un equipo de profesionales de edades diversas, compenetrándose perfectamente entre ellos, y aportando cada uno lo de mejor de sí mismo: experiencia, dinamismo, modernidad y responsabilidad.

Queremos que el personal de Dyneke se sienta parte de la empresa. La cohesión y el buen ambiente facilitan el día a día y potencian la coordinación de los distintos departamentos de la empresa para llevar a cabo los proyectos más exigentes.

#### **INNOVACIÓN**

Somos conscientes que tenemos que estar en constante evolución para poder conseguir una mejora continua de nuestros productos, añadiendo: tejidos técnicos, fibras resistentes con acabados de excelentes resultados, componentes de máxima durabilidad y detalles sofisticados.

Apostamos por la innovación y las nuevas tecnologías en todos los sectores de la empresa: desde el diseño hasta la expedición, pasando por la producción. Contamos con un entorno logístico avanzado, adecuando nuestras instalaciones a las necesidades actuales. Para nosotros la innovación es un valor añadido, fundamental y necesario.

#### **DISEÑO**

Nos caracterizamos en adaptar las últimas tendencias de moda a la uniformidad laboral, haciendo que nuestros usuarios se sientan exclusivos.

Nuestro departamento de diseño y patronaje trabaja en constante evolución con los estándares de moda.

In Dyneke we like we do and we commit every day in our work well done. Our values are based on these fundamental pillars:

---

#### **QUALITY**

We are convinced we have to offer the best quality and the best possible service to our customers. We try that each garment is adapted to the maximum needs of each professional sector, focusing on the criteria acquired from the many professionals who use our uniforms. We use the top quality raw materials and our production process meet the highest demands. The satisfaction of our customers is fundamental for us.

#### **TEAMWORK**

The long history of the company makes that we currently have a professional team of different ages, making a perfect understanding between them, helping each one with the best of himself: experience, energy, modernity and responsibility. We want the Dyneke staff to feel part of the company. The cohesion and good relationship make daily work easier and facilitate the coordination between different departments of the company to achieve the most difficult projects successfully.

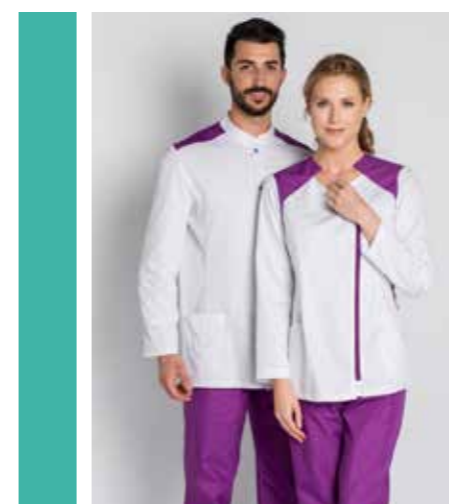
#### **INNOVATION**

We know we have to be in constant development to get continuous improvement of our products, adding: technical material, resistant fibers with finished of high results, maximum durability in the parts and sophisticated details.

We opted for the innovation and the new technologies in all areas of the company: since the design until the expedition by way the production process. We have with an advanced logistic, updating our facilities to the current needs. For us innovation is an added value, fundamental and necessary for us.

#### **DESIGN**

We are characterized in adapting the last fashion trends to the work uniformity, getting our users feels exclusive. Our pattern and design department works day after day with the fashion currently.



## COMERCIO

Casacas lisas y de colores	10
Estampados	23
Punto	32
Estolas y Pichis	34
Pantalones	47
Caballero	56

## CUIDADO Y SALUD

Casacas	62
Conjuntos	73
Levitas	76

## SANIDAD

Pijamas	82
Básicos	86
Batas	88
Conjuntos	91
Chaquetas	97
Estampados	105
Lisos	107
Gorros	111

## HOSTELERIA

Chaquetas	114
Conjuntos	126
Pantalones	132
Sala	134
Delantales	139
Bandanas y Gorros	148
Terraza	152
Denim	157
Limpieza	165

<b>Tecnología de los tejidos</b>	170
<b>Guía de tallas</b>	171

La elegancia está en la actitud  
*Elegance is in the attitude*

*Erika Weise*

# Comercio



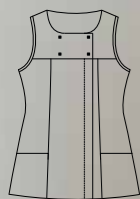
8675

Chaqueta abrochada con corchetes ocultos en tapeta.  
Jacket with hidden snap fasteners.

725 - Negro/Black  
717 - Fucsia/Fuchsia  
100% Pol./Poly

700 - Blanco/White  
67 % Pol./Poly  
33 % Alg./Cotton

Largo/length: 70 cm  
Talla/size: SP-XG / XS-XXXL



8675700



8675725

8675717



DYNEKE

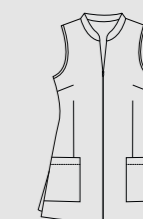
8069

Casaca cuello alto con cremallera parcial invisible.  
Stylist vest with mandarin collar and invisible zipper.

700 - Blanco/White  
67 % Pol./Poly  
33 % Alg./Cotton

725 - Negro/Black  
100 % Pol./Poly

Largo/length: 73 cm  
Talla/size: SP-XG / XS-XXXL



8069700



dyneke.com



8069725

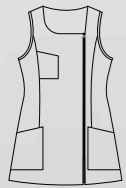
**8053**

Casaca entallada con cremallera. Fitted tunic with zipper.

725 - Negro/Black  
721 - Rojo/Red  
727 - Pistacho/Pistachio  
100 % Pol./Poly

700 - Blanco/White  
67 % Pol./Poly  
33 % Alg./Cotton

Largo/length: 73 cm  
Talla/size: SP-XG / XS-XXXL



8053725



8053700



8053727

8053721

DYNEKE



8676700



8676725

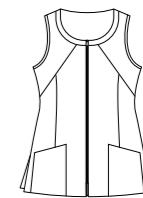
**8676**

Casaca entallada con cremallera central. Jacket with central zipper.

700 - Blanco/White  
67 % Pol./Poly  
33 % Alg./Cotton

725 - Negro/Black  
100 % Pol./Poly

Largo/length: 70 cm  
Talla/size: SP-XG / XS-XXXL



8285725

**8285**

Chaqueta cintas contraste con cremallera lateral invisible. Bright tapes jacket with invisible zipper.

725 - Negro/Black  
100% Pol./Poly

Largo/length: 70 cm  
Talla/size: SP-XG / XS-XXXL



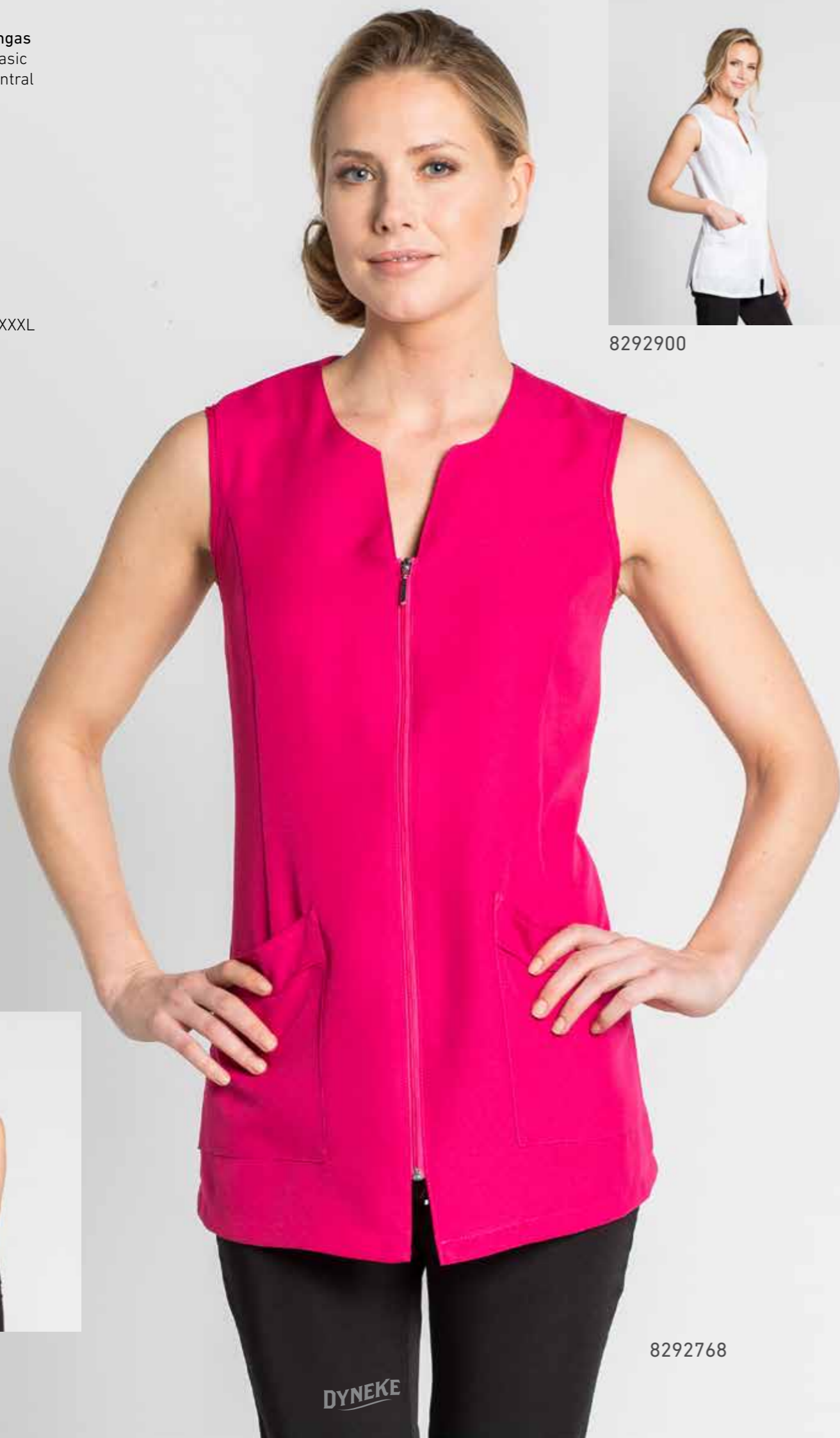
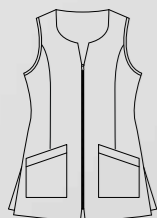
**8292**

Chaqueta básica s/mangas y cremallera central. Basic tunic sleeveless and central zipper.

725 - Negro/Black  
768 - Fucsia/Fuchsia  
100 % Pol./Poly

900 - Blanco/White  
67 % Pol./Poly  
33 % Alg./Cotton

Largo/length: 73 cm  
Talla/size: SP-XG / XS-XXXL



8292900



8292725

8292768

DYNEKE

**8134**

Chaqueta efecto picos con corchetes. Tunic with snap fastener.

700 - Blanco/White  
67 % Pol./Poly  
33 % Alg./Cotton

725 - Negro/Black  
100 % Pol./Poly

Largo/length: 70 cm  
Talla/size: SP-XG / XS-XXXL



8134725



8134700

dyneke.com

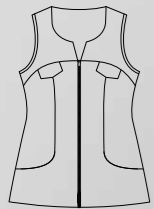


**8642**

Chaqueta entallada con cremallera central. Fitted jacket with central zipper.

700 - Gris-Blanco/  
Gray&White  
725 - Gris-Negro/  
Gray&Black  
70 % Alg./Cotton  
30 % Pol./Poly

Largo/length: 70 cm  
Talla/size: SP-XG / XS-XXXL



8642700



8642725



DYNEKE



8671700



POPELIN

8671841

**8671**

Casaca con vivo satén. Tunic with bright satin.

700 - Blanco/White  
67 % Pol./Poly  
33 % Alg./Cotton

Casaca tejido popelín con vivo satén blanco. Poplin fabric tunic with bright satin.

841 - Negro/Black  
70 % Alg./Cotton  
30% Pol./Poly



Largo/length: 68 cm  
Talla/size: SP-XG / XS-XXXL



8673700



8673724

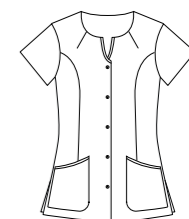
**8673**

Chaqueta entallada abrochada con corchetes. Fitted jacket with fasteners.

700 - Blanco/White  
67 % Pol./Poly  
33 % Alg./Cotton

724 - Marino/Navy  
100 % Pol./Poly

Largo/length: 70 cm  
Talla/size: SP-XG / XS-XXXL



**8094**

Chaqueta cuello mao con corchetes. Tunic with mao collar and fasteners.

700 - Blanco/White  
67 % Pol./Poly  
33 % Alg./Cotton

721 - Rojo/Red  
725 - Negro/Black  
100% Pol./Poly

Largo/length: 73 cm  
Talla/size: SP-XG / XS-XXXL



8094700



8094721



8094725

DYNEKE

**8270**

Chaqueta básica con corchetes manga corta. Basic tunic with snap fasteners.

700 - Blanco/White  
67 % Pol./Poly  
33 % Alg./Cotton

725 - Negro/Black  
100% Pol./Poly

Largo/length: 70 cm  
Talla/size: SP-XG / XS-XXXL



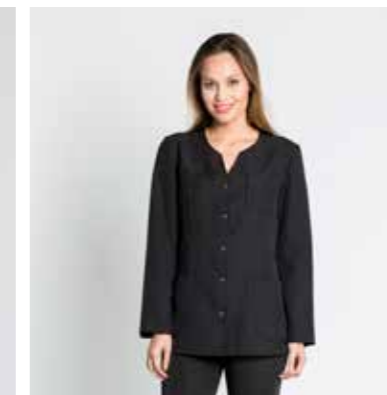
8270700



8270725



8274700



8274725

**8274**

Chaqueta básica con corchetes manga larga. Basic tunic with snap fasteners l/sleeve.

700 - Blanco/White  
67 % Pol./Poly  
33 % Alg./Cotton

725 - Negro/Black  
100 % Pol./Poly

Largo/length: 70 cm  
Talla/size: SP-XG / XS-XXXL



**8288**

Chaqueta entallada con corchetes. Tunic with snap fastener.

853 - Fucsia/Fuchsia  
 865 - Turquesa/Turquoise  
 887 - Pistacho/Pistachio  
 67 % Pol./Poly  
 33 % Alg./Cotton

Largo/length: 70 cm  
 Talla/size: SP-XG / XS-XXXL



8288853



8288865



8288887

DYNEKE

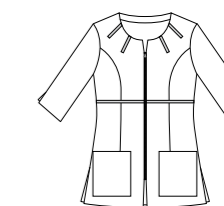
**8664**

Chaqueta cuello con vivo raso y cremallera central. Jacket with satin straps and central zipper.

700 - Blanco/White  
 67 % Pol./Poly  
 33 % Alg./Cotton

725 - Negro/Black  
 100% Pol./Poly

Largo/length: 73 cm  
 Talla/size: SP-XG / XS-XXXL



8664725



8664700



8665700

**8665**

Chaqueta con cuello tirilla alto. Jacket with high mao collar.

700 - Blanco/White  
 67 % Pol./Poly  
 33 % Alg./Cotton

Largo/length: 70 cm  
 Talla/size: SP-XG / XS-XXXL



**8298**

Chaqueta manga 3/4 con cremallera. Jacket 3/4 sleeve with zipper.

700 - Blanco/White  
67 % Pol./Poly  
33 % Alg./Cotton

725 - Negro/Black  
100% Pol./Poly

Largo/length: 70 cm  
Talla/size: SP-XG / XS-XXXL



8298700



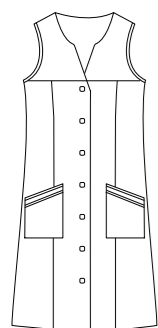
8298725

**8297**

Bata larga con botones. Long coat services with buttons.

700 - Blanco/White  
67 % Pol./Poly  
33 % Alg./Cotton

Largo/length: 95 cm  
Talla/size: SP-XG / XS-XXXL



8297700

**8618**

Chaqueta estampada sin mangas con cremallera. Patterned sleeveless tunic with zipper.

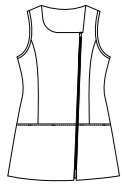
725 - Negro/Black  
100% Pol./Poly  
Largo/length: 70 cm  
Talla/size: SP-XG / XS-XXXL



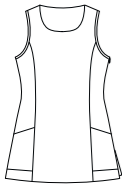
8618725

**8616**

Chaqueta estampada sin mangas con cremallera.  
Patterned sleeveless tunic with zipper.

**8629**

Chaqueta estampado indio cremallera lateral. Patterned jacket with side invisible zipper.



725 - Negro/Black  
100% Pol./Poly  
Largo/length: 73 cm  
Talla/size: SP-XG / XS-XXXL

**8640**

Casaca entallada con estampado. Cremallera lateral invisible. Patterned jacket with side invisible zipper.

**8634**

Chaqueta efecto cruzado con cremallera lateral invisible. Cross effect jacket with side invisible zipper.



725 - Negro/Black  
100 % Pol./Poly  
Largo/length: 70 cm  
Talla/size: SP-XG / XS-XXXL



8616725



8629725



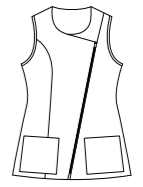
8631725



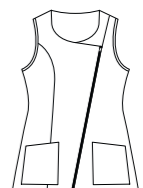
8619725

**8631**

Casaca con cremallera diagonal. Pattern tunic with diagonal zipper.

**8619**

Chaqueta entallada con cremallera diagonal. Fitted jacket with diagonal zipper.



725 - Negro/Black  
100% Pol./Poly

Largo/length: 70 cm  
Talla/size: SP-XG / XS-XXXL



8640725



8634725



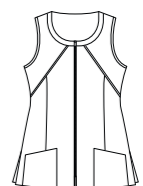
8635725



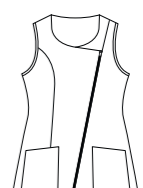
8637725

**8635**

Chaqueta entallada con cremallera central. Fitted jacket with central zipper.

**8637**

Chaqueta entallada con cremallera diagonal. Fitted jacket with diagonal zipper.

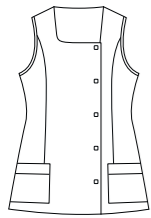


725 - Negro/Black  
100% Pol./Poly

Largo/length: 70 cm  
Talla/size: SP-XG / XS-XXXL

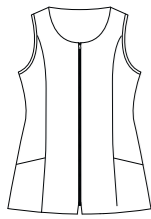
**8630**

Chaqueta con corchetes.  
Patterned tunic with fasteners.



**8620**

Chaqueta con cremallera central.  
Patterned tunic with central zipper.

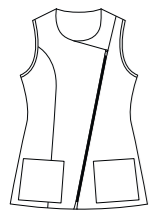


725 - Negro/Black  
100% Pol./Poly  
Largo/length: 70 cm  
Talla/size: SP-XG / XS-XXXL

**8621**

Casaca entallada con cremallera diagonal.  
Fitted jacket with diagonal zipper.

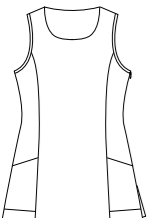
725 - Negro/Black  
100% Pol./Poly  
Largo/length: 70 cm  
Talla/size: SP-XG / XS-XXXL



**8622**

Casaca entallada con cremallera lateral invisible.  
Fitted jacket with side invisible zipper.

725 - Negro/Black  
100% Pol./Poly  
Largo/length: 73 cm  
Talla/size: SP-XG / XS-XXXL



8630725



8620725



8621725



8622725



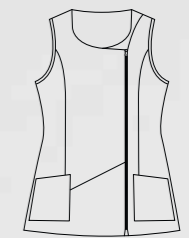
8638725

**8638**

Casaca entallada con cremallera frontal en lado izquierdo.  
Fitted jacket with left side front zipper.

725 - Negro-Azul / Black&Blue  
720 - Negro-Fucsia / Black&Fuchsia  
100% Pol./Poly

Largo/length: 70 cm  
Talla/size: SP-XG / XS-XXXL



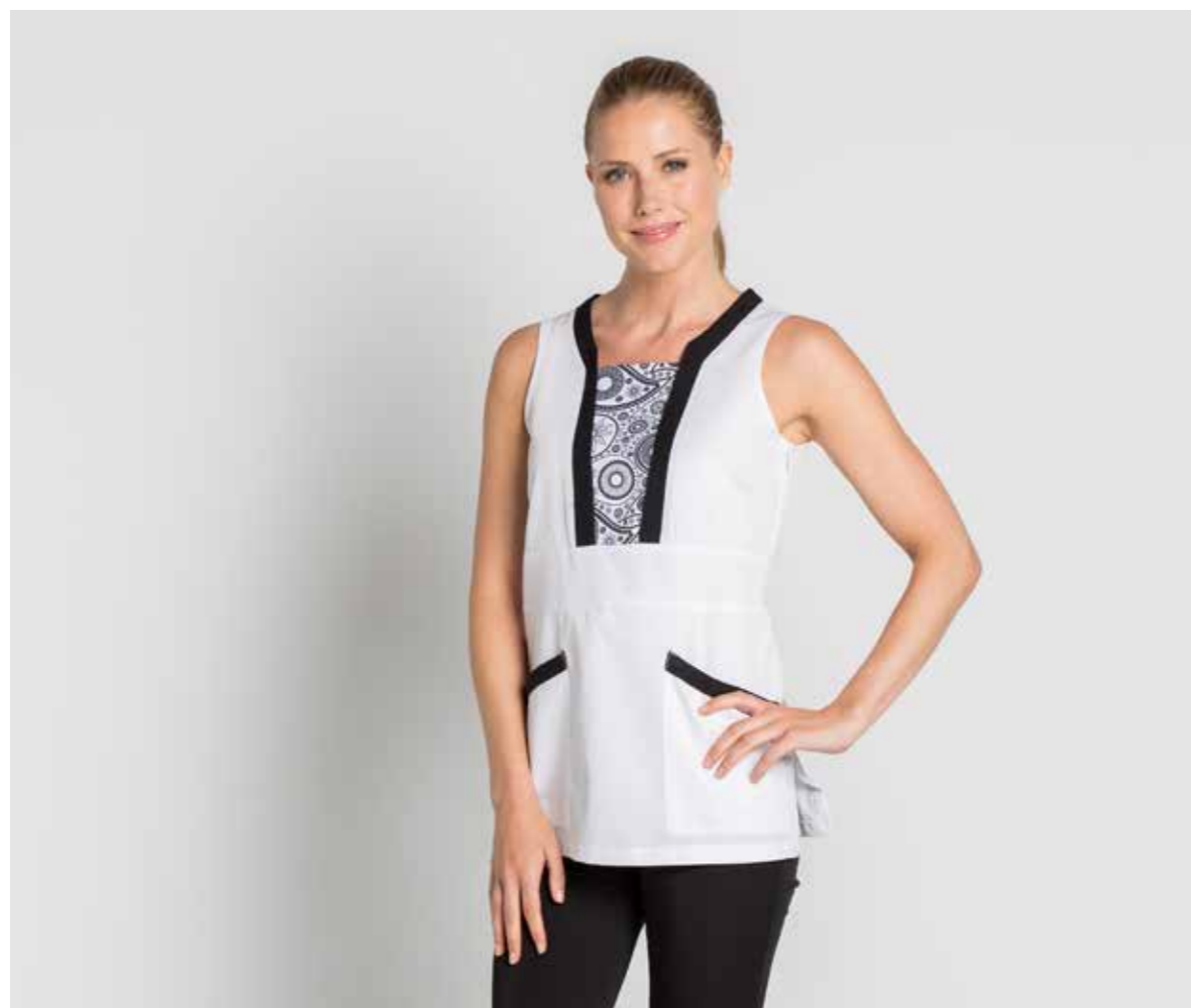
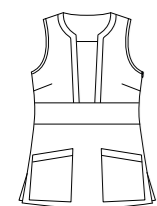
8638720

**8640**

Casaca entallada con estampado. Cremallera lateral invisible. Patterned jacket with side invisible zipper.

700 - Blanco/White  
67 % Pol./Poly  
33 % Alg./Cotton

Largo/length: 70 cm  
Talla/size: SP-XG / XS-XXXL



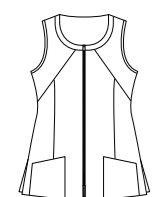
8640700

**8636**

Chaqueta con cremallera. Fitted jacket with zipper.

700 - Blanco/White  
67 % Pol./Poly  
33 % Alg./Cotton

Largo/length: 70 cm  
Talla/size: SP-XG / XS-XXXL



8636700

DYNEKE

8627725



dyneke.com

**8625**

Chaqueta entallada con cremallera lateral invisible. Fitted jacket with side invisible zipper.  
700 - Blanco/White  
67 % Pol./Poly  
33 % Alg./Cotton

**8626**

Chaqueta entallada con cremallera lateral invisible. Fitted jacket with side invisible zipper.  
725 - Turquesa/Turquoise  
100% Pol./Poly

**8627**

Chaqueta entallada con cremallera lateral invisible. Fitted jacket with side invisible zipper.  
725 - Fucsia/Fuchsia  
100% Pol./Poly



Largo/length: 70 cm  
Talla/size: SP-XG / XS-XXXL



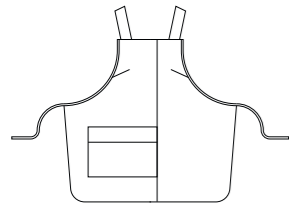
8625700



8626725

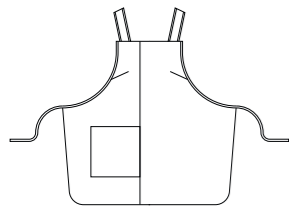
**8683**

Estola abrochada con cintas traseras. Patterned stole with cloth straps.



**8686**

Estola abrochada con cintas traseras. Patterned stole with cloth straps.



725 - Negro/Black  
100% Pol./Poly

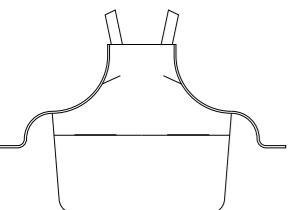
Largo/length: 81 cm  
Talla/size: Única / Unic

**8687**

Estola abrochada con cintas traseras. Patterned stole with cloth straps.

725 - Negro/Black  
100% Pol./Poly

Largo/length: 81 cm  
Talla/size: Única / Unic



8683725



8686725



8684700



8684725



8687725



8121844

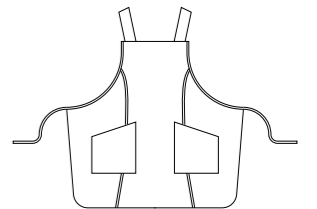
**8684**

Estola estampada con cintas. Patterned stole with cloth straps.

700- Negro-Blanco/  
Black&White  
67 % Pol./Poly  
33 % Alg./Cotton

725 - Negro-Fucsia/  
Black&Fuchsia  
100 % Pol./Poly

Largo/length: 81 cm  
Talla/size: Única / Unic

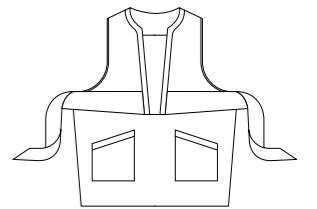


**8121**

Estola estampado y cintura marcada. Marked waist stole with cloth straps.

844 - Gris/Gray  
70% Alg./Cotton  
30% Pol./Poly

Largo/length: 77 cm  
Talla/size: Única / Unic



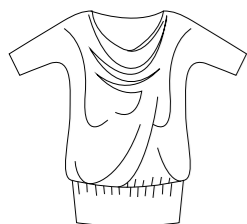


**8277**

Blusón murciélago con elástico en cintura.  
Smock top with elastic waistband.

827 - Negro/Black  
94% Pol./Poly  
6% Elastan/Elast.

Largo/length: 73 cm  
Talla/size: SP-XG / XS-XXXL



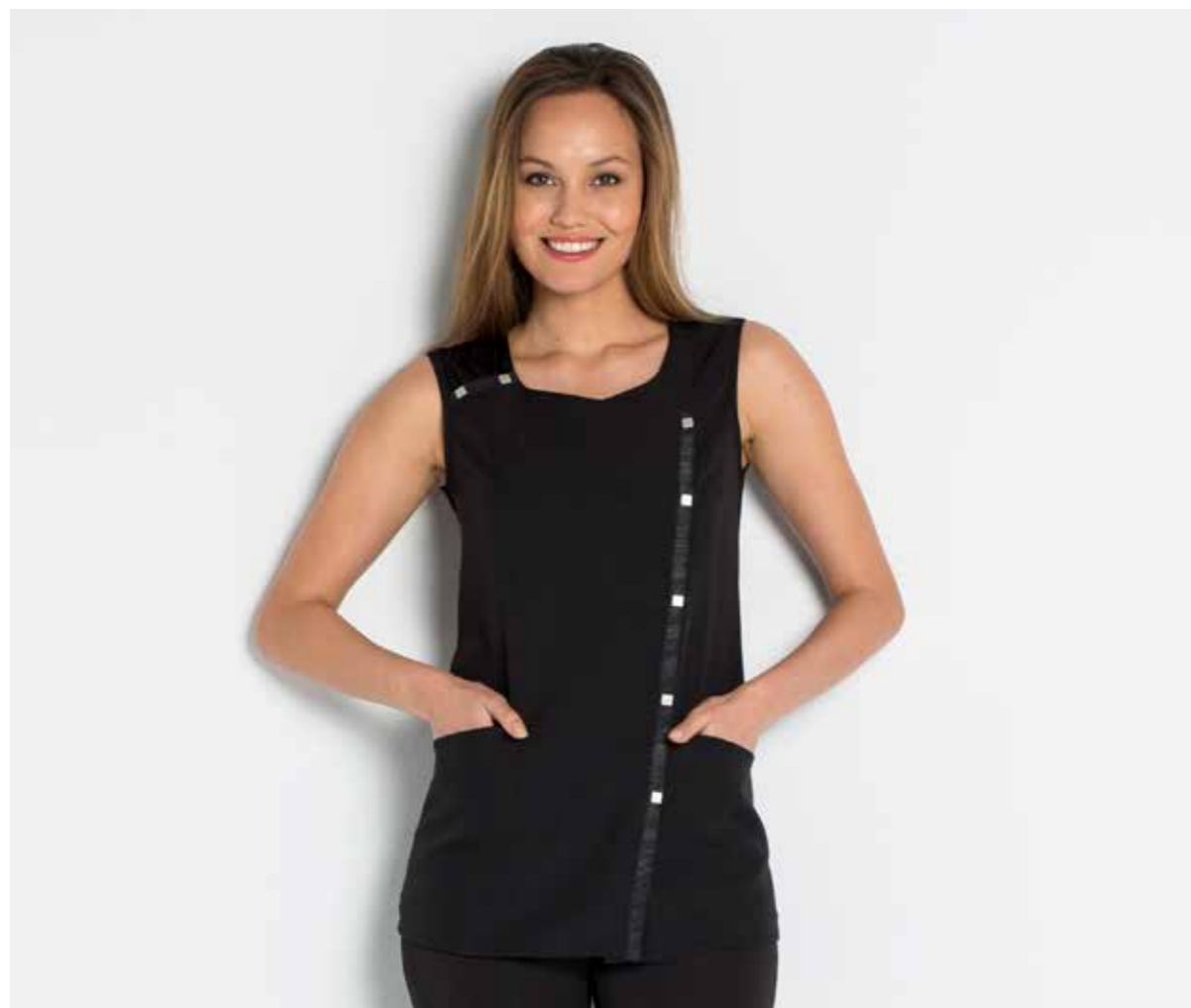
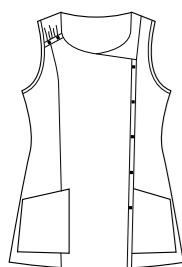
8277827

**8279**

Chaqueta con corchetes.  
Tunic stich and straps.

725 - Negro/Black  
100% Pol./Poly

Largo/length: 70 cm  
Talla/size: SP-XG / XS-XXXL



8279725



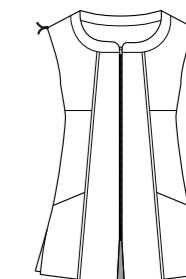
8271725

**8271**

Pichi de punto con cremallera. Detalle tiras charol. Strapped patent leather jumper dress.

725 - Negro/Black  
100 % Pol./Poly

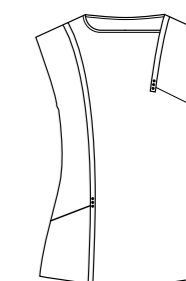
Largo/length: 80 cm  
Talla/size: SP-XG / XS-XXXL

**8278**

Blusón de punto con cintas y tachas. Smock with straps and ribbons.

827 - Negro/Black  
94 % Pol./Poly  
6 % Elastan / Elast.

Largo/length: 70 cm  
Talla/size: SP-XG / XS-XXXL



8278827

**8470**

Estola cuello mao con cintas ajustables traseras. Stole mao collar with cloth straps.

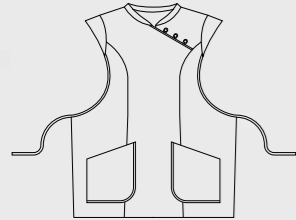
700 - Blanco/White  
67% Pol./Poly  
33% Alg./Cotton

768 - Fucsia/Fuchsia  
725 - Negro/Black  
100% Pol./Poly

Largo/length: 77 cm  
Talla/size: Única / Unic



8470700



8470725



8470768

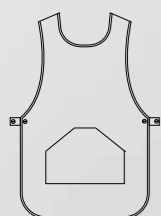
8467

Estola con botones laterales.  
Stole with side buttons.

700 - Blanco/White  
67% Pol./Poly  
33% Alg./Cotton

768 - Fucsia/Fuchsia  
725 - Negro/Black  
726 - Naranja/Orange  
721 - Rojo / Red  
727 - Pistacho / Pistachio  
724 - Marino / Navy  
722 - Granate / Garnet  
100% Pol./Poly

Largo/length: 81 cm  
Talla/size: Única / Unic



8467722



8467726



8467725

DYNEKE

8467700



dyneke.com



8467768



8467721



8467727



8467724

**8474**

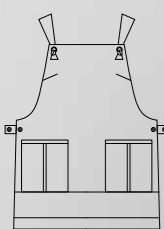
Estola multiservicios con botones laterales. Versatil stole with side buttons.

701 - Negro-rojo/Black&Red  
 795 - Rojo-Beig/Red&Beig  
 807 - Negro-fucsia/Black&Fuchsia  
 67% Pol./Poly  
 33% Alg./Cotton

306 - Beig-marrón/Beig&Brown  
 53% Alg./Cotton  
 25% Pol./Poly  
 22% Lino / Linen

887 - Tejano-verde/Denim&Green  
 850 - Tejano-fucsia/Denim&Fuchsia  
 40% Pol./Poly  
 57% Alg./Cotton  
 6 % Elastan / Elast

Largo/length: 79 cm  
 Talla/size: Única / Unic



8474795



8474701



8474887



8474807



8474850



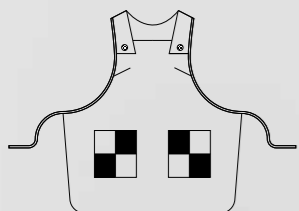
8474306

**8195**

Estola damero con cintas para abrochar atrás. Checkered stole with cloth straps.

- 725 - Negro/Black
- 721 - Rojo/red
- 727 - Pistacho / Pistachio
- 713 - Negro Ocre / Black Ochre
- 100 % Pol./Poly

Largo/length: 81 cm  
Talla/size: Única / Unic



8195725



8195727



8195713



8195721

DYNEKE



8473307



8473308

dyneke.com

**8473**

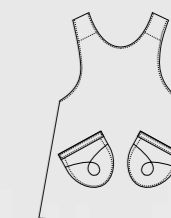
Estola cruzada en la espalda. Stole crossed at the back.

- 308 - Negro/Black
- 307 - Rojo/Red
- 70% Alg./Cotton
- 30 % Pol./Poly



- 775 - Tejano/Denim
- 65% Pol./Poly
- 32% Alg./Cotton
- 3 % Elastan / Elast

Largo/length: 90 cm  
Talla/size: Única / Unic



8473775

8480

Estola ángulo con cintas ajustables. Angle stole with adjustable cloth straps.

700 - Blanco/White  
67% Pol./Poly  
33% Alg./Cotton

844 - Gris/Gray  
70% Alg./Cotton  
30 % Pol./Poly



709 - Arena/Sand  
725 - Negro/Black  
721 - Rojo/Red  
100 % Pol./Poly

Largo/length: 72 cm  
Talla/size: Única / Unic



8480844



8480700



8480709



8480725



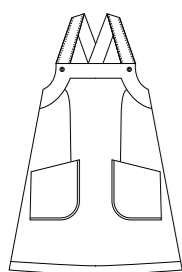
8480721

**8192**

Pichi cruzado atrás con cremallera lateral. Jumper dress with side zipper and crossed at the back.

699 - Marrón/Brown  
701 - Negro-Verde/  
Black&Green  
67 % Pol./Poly  
33 % Alg./Cotton

Largo/length: 90 cm  
Talla/size: SP-XG / XS-XXXL



8192699



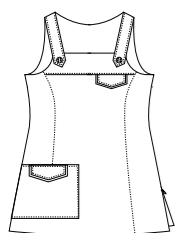
8192701

**8663**

Pichi con cremallera lateral invisible. Jumper dress with side invisible zipper.

725 - Negro/Black  
100 % Pol./Poly

Largo/length: 76 cm  
Talla/size: SP-XG / XS-XXXL



8663725

8047700

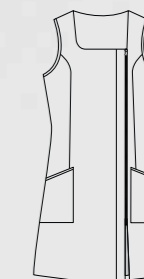
**8047**

Pichi con cremallera. Long jumper dress with zipper.

700 - Blanco/White  
67 % Pol./Poly  
33 % Alg./Cotton

725 - Negro/Black  
100% Pol./Poly

Largo/length:90 cm  
Talla/size: SP-XG / XS-XXXL



8047725

8198

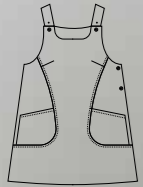
Pichi multiservicios con corchetes en el lateral. Versatil jumper dress with side metallic buttons.

700 - Blanco/White  
67 % Pol./Poly  
33 % Alg./Cotton

709 - Arena/Sand  
725 - Negro/Black  
721 - Rojo/Red  
100% Pol./Poly

775 - Tejano/Denim  
65% Pol./Poly  
32% Alg./Cotton  
6 % Elastan / Elast

Largo/length: 90 cm  
Talla/size: SP-XG / XS-XXXL



8198721

8198709



8198700



8198725



8198775





**8283**

Pantalón legging con cinturilla elástica. Rubber waistband legging pants.

830 - Negro/Black  
94 % Pol./Poly  
6 % Elastan / Elast

Largo/length: 101 cm  
Talla/size: 36 - 52



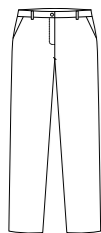
**8077**

Pantalón mujer con cinturilla plana y cremallera. Pants flat waist and zipper.

725 - Negro/Black  
100 % Pol./Poly

Largo/length: 108 cm  
Talla/size: SP-XG / XS-XXXL

Especial para la hosteleria.



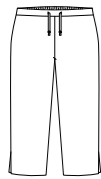
**8062**

Pantalón pirata con cintura elastica atrás. Cropped pants with elastic back waist.

725 - Negro/Black  
100 % Pol./Poly

700 - Blanco/White  
67 % Pol./Poly  
33 % Alg./Cotton

Largo/length: 78 cm  
Talla/size: SP-XG / XS-XXXL



8283830



8077725



8276829

**8276**

Pantalón push up sin cintura elástica. Push up pants without elastic waist.

829 - Blanco/White  
97 % Pol./Poly  
6 % Elastan / Elast

830 - Negro/Black  
94 % Pol./Poly  
6 % Elastane

Largo/length: 98 cm  
Talla/size: 36 - 52



8062700



8062725



8276830

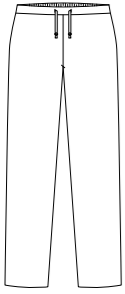
**8056**

Pantalón mujer con cintura baja y goma. Women's pants with elastic and low waist.

725 - Negro/Black  
100 % Pol./Poly

700 - Blanco/White  
67 % Pol./Poly  
33 % Alg./Cotton

Largo/length: 108 cm  
Talla/size: SP-XG / XS-XXXL



8056700



8056725



8108700



8108725

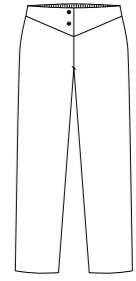
**8108**

Pantalón de talle bajo con 2 corchetes. Pants low waist and snap fastener.

700 - Blanco/White  
67 % Pol./Poly  
33 % Alg./Cotton

725 - Negro/Black  
100 % Pol./Poly

Largo/length: 102 cm  
Talla/size: SP-XG / XS-XXXL

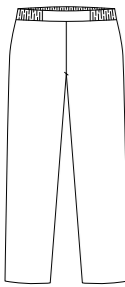
**8525**

Pantalón comercio con cintura plana delantera. Pants with front flat waist.

725 - Negro/Black  
100 % Pol./Poly

700 - Blanco/White  
67 % Pol./Poly  
33 % Alg./Cotton

Largo/length: 102 cm  
Talla/size: SP-XG / XS-XXXL



8525700



8525725



8287700



8287725

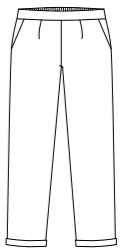
**8287**

Pantalón con cintura plana y dobladillo. Pants with front flat waist and turn up.

700 - Blanco/White  
67 % Pol./Poly  
33 % Alg./Cotton

725 - Negro/Black  
100 % Pol./Poly

Largo/length: 98 cm  
Talla/size: SP-XG / XS-XXXL



**8061**

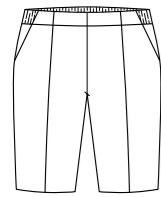
Bermuda señora con cintura plana. Bermuda shorts for women with front flat waist.

**700 - Blanco/White**  
67 % Pol./Poly  
33 % Alg./Cotton

**725 - Negro/Black**  
100 % Pol./Poly

**775 - Tejano/Denim**  
65% Pol./Poly  
32% Alg./Cotton  
3% Elastano/Elast.

Largo/length: 52 cm  
Talla/size: SP-XG / XS-XXXL



8061700



8061725



8061775

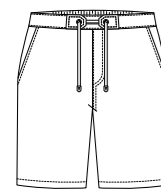
**8543**

Pantalón pirata con cintura elástica atrás. Cropped pants with elastic back waist.

**701 - Negro/Black**  
**700 - Blanco/White**  
67 % Pol./Poly  
33 % Alg./Cotton

**775 - Tejano/Denim**  
65% Pol./Poly  
32% Alg./Cotton  
3% Elastano/Elast.

Largo/length: 53 cm  
Talla/size: SP-XG / XS-XXXL



8543700



8543701



8543775



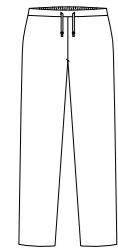
**9929**

Pantalón unisex con cinturilla elástica y bolsillos  
Unisex trouser with elastic waist and pockets.

725 - Negro/Black  
100 % Pol./Poly

900 - Blanco/White  
67 % Pol./Poly  
33 % Alg./Cotton

Largo/length: 108 cm  
Talla/size: SP-XG / XS-XXXL



9929900



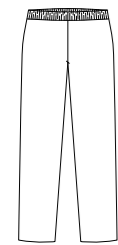
9929725

**8201**

Pantalón unisex con cinturilla elástica. Sin bolsillos.  
Unisex trouser with elastic waist. Without pockets.

725 - Negro / Black  
100 % Pol./Poly

Largo/length: 105 cm  
Talla/size: SP-XG / XS-XXXL



8201725



8542700



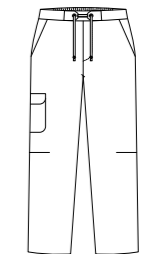
8542701

**8542**

Pantalón caballero trinchas con cinta. Pants with drawstring elastic waist.

700 - Blanco/White  
701 - Negro/Black  
67 % Pol./Poly  
33 % Alg./Cotton

Largo/length: 107 cm  
Talla/size: SP-XG / XS-XXXL



Ver más pantalones en página 132-133

**8537**

Chaqueta caballero cruzada  
manga larga. Men's Double-  
breasted jacket l/sleeve

749-Gris Marengo/Dark Gray  
100 % Pol./Poly

Largo/length: 74 cm  
Talla/size: SP-XG / XS-XXXL



8537749

**8527**

Chaqueta caballero cruzada  
manga corta. Men's Double-  
breasted jacket s/sleeve

749-Gris Marengo/Dark Gray  
100 % Pol./Poly

Largo/length: 74 cm  
Talla/size: SP-XG / XS-XXXL



8527749



8444701

**8444**

Chaqueta caballero cuello  
mao manga larga. Vivo  
pistacho.  
Men's jacket with mao collar  
l/sleeve.Pistachio contrast.

701 - Negro/Black  
67 % Pol./Poly  
33 % Alg./Cotton

Largo/length: 76 cm  
Talla/size: SP-XG / XS-XXXL



8445701

**8445**

Chaqueta caballero cuello  
mao manga corta. Vivo  
blanco.  
Men's jacket with mao collar  
s/sleeve.White contrast.

701 - Negro/Black  
67 % Pol./Poly  
33 % Alg./Cotton

Largo/length: 76 cm  
Talla/size: SP-XG / XS-XXXL



Ver más chaquetas  
caballero en página  
134-138

8447

Chaqueta caballero con cremallera. Men's jacket with zip fastening.

701 - Negro/Black  
67 % Pol./Poly  
33 % Alg./Cotton

Largo/length: 74 cm  
Talla/size: SP-XG / XS-XXX



8447701



La moda caduca, el estilo jamás-  
*Fashion expires, style never*

*Coco Chanel*

# Cuidado y Salud



**8231**

Chaqueta cruzada botón ovalado manga corta. Double-breasted jacket with oval buttons, s/sleeve

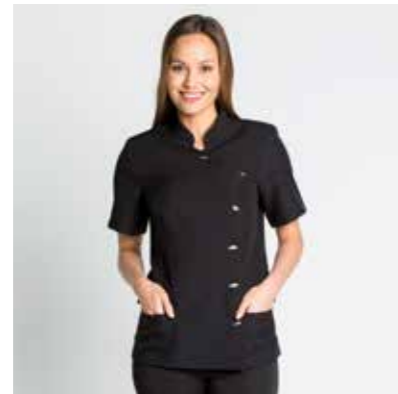
725 - Negro/Black  
100 % Pol./Poly

700 - Blanco/White  
67 % Pol./Poly  
33 % Alg./Cotton

Largo/length: 68 cm  
Talla/size: SP-XG / XS-XXXL



8231700



8231725



8232725



8232700

**8232**

Chaqueta cruzada botón ovalado manga larga. Double-breasted jacket with oval buttons, l/sleeve

725 - Negro/Black  
100 % Pol./Poly

700 - Blanco/White  
67 % Pol./Poly  
33 % Alg./Cotton

Largo/length: 68 cm  
Talla/size: SP-XG / XS-XXXL



Ver combinaciones de pantalones en página 48-55

8242844



**8242**

Chaqueta oriental cuello mao manga corta. Oriental jacket with mao collar, s/sleeve.

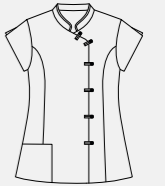
725 - Negro/Black  
100 % Pol./Poly

700 - Blanco/White  
67 % Pol./Poly  
33 % Alg./Cotton

824 - Arena / Sand  
844 - Gris/Gray  
70% Alg./Cotton  
30 % Pol./Poly



Largo/length: 66 cm  
Talla/size: SP-XG / XS-XXXL



8242700



8242725



8242824



**8243**

Chaqueta oriental cuello mao manga larga. Oriental jacket with mao collar, l/ sleeve

725 - Negro/Black  
100 % Pol./Poly

700 - Blanco/White  
67 % Pol./Poly  
33 % Alg./Cotton

Largo/length: 66 cm  
Talla/size: SP-XG / XS-XXXL



8243700



8243725

DYNEKE



8055700



8057700

**8055**

Chaqueta cierre curvo corchetes manga larga. Curved closure jacket with snap fasteners, l/sleeve

700 - Blanco/White  
67 % Pol./Poly  
33 % Alg./Cotton

Largo/length: 68 cm  
Talla/size: SP-XG / XS-XXXL



**8057**

Chaqueta cierre curvo corchetes manga corta. Curved closure jacket with snap fasteners, s/sleeve

700 - Blanco/White  
67 % Pol./Poly  
33 % Alg./Cotton

Largo/length: 68 cm  
Talla/size: SP-XG / XS-XXXL



8669700



8669725

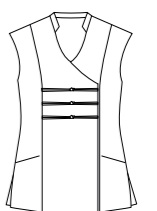
**8669**

Chaqueta cruzada con corchetes ocultos. Double-breasted jacket with hidden snap fasteners, s/sleeve

725 - Negro/Black  
100 % Pol./Poly

700 - Blanco/White  
67 % Pol./Poly  
33 % Alg./Cotton

Largo/length: 70 cm  
Talla/size: SP-XG / XS-XXXL



**8677**

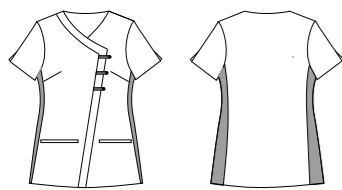
Chaqueta costadillo 'Cool dry' con corchetes manga corta. Jacket with 'Cool Dry' grid on the side and snap fasteners, s/sleeve

777 - Negro/Black  
65 % Pol./Poly  
35 % Alg./Cotton



700 - Blanco/White  
67 % Pol./Poly  
33 % Alg./Cotton

Largo/length: 70 cm  
Talla/size: SP-XG / XS-XXXL



**8679**

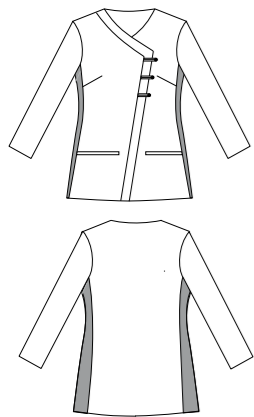
Chaqueta costadillo 'Cool dry' con corchetes manga larga. Jacket with 'Cool Dry' grid on the side and snap fasteners, l/sleeve

777 - Negro/Black  
65 % Pol./Poly  
35 % Alg./Cotton



700 - Blanco/White  
67 % Pol./Poly  
33 % Alg./Cotton

Largo/length: 73 cm  
Talla/size: SP-XG / XS-XXXL



8677700



8677777



8679700



8679777



8261700



8261725



8260700



8260725



8260844

**8261**

Kimono cruzado botón lateral manga corta. Double-breasted kimono with lateral button, s/sleeve

725 - Negro/Black  
100 % Pol./Poly

700 - Blanco/White  
67 % Pol./Poly  
33 % Alg./Cotton

Largo/length: 68 cm  
Talla/size: SP-XG / XS-XXXL



**8260**

Chaqueta japonesa cuello mao manga corta. Japanese jacket with mao collar, s/sleeve

700 - Blanco/White  
67 % Pol./Poly  
33 % Alg./Cotton

725 - Negro/Black  
100 % Pol./Poly

844 - Gris/Gray  
70% Alg./Cotton  
30% Pol./Poly



Largo/length: 68 cm  
Talla/size: SP-XG / XS-XXXL



Ver combinaciones de pantalones en página 48-55

**8667**

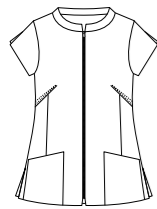
Chaqueta entallada, escote barco y cremallera m/caida  
Jacket fitted around the waist with neckline, zip fastener and drooping sleeves.

700 - Blanco/White  
67 % Pol./Poly  
33 % Alg./Cotton

844 - Gris/Gray  
70% Alg./Cotton  
30% Pol./Poly



Largo/length: 70 cm  
Talla/size: SP-XG / XS-XXXL



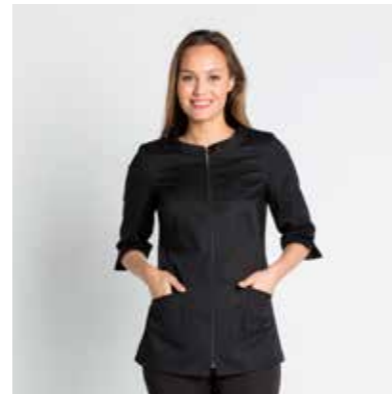
8667844



8667700



8670700



8670701

**8670**

Chaqueta entallada, escote barco y cremallera manga 3/4  
Jacket fitted around the waist with neckline, zip fastener and 3/4 sleeves.

700 - Blanco/White  
701 - Negro/Black  
67 % Pol./Poly  
33 % Alg./Cotton

Largo/length: 70 cm  
Talla/size: SP-XG / XS-XXXL

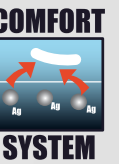


**8641**

Chaqueta cuello alzado y corchetes ocultos. Jacket with long neck and hidden snap fasteners.

520 - Blanco/White  
521 - Negro/Black  
64 % Pol./Poly  
33 % Alg./Cotton  
3% Elastano/Elastan

Largo/length: 68 cm  
Talla/size: SP-XG / XS-XXXL



8641520



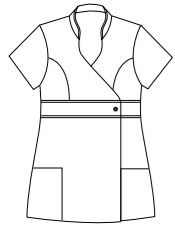
8641521

**8299**

Chaqueta cruzada con corchete manga corta. Double-breasted jacket with snap fastener, s/sleeve.

844 - Gris/Gray  
824 - Arena/Sand  
70 % Alg./Cotton  
30 % Pol./Poly

Largo/length: 68 cm  
Talla/size: SP-XG / XS-XXXL



8299844



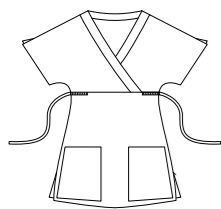
8299824

**8259**

Casaca frunce en pecho manga caída. Tunic with elastic band and drooping sleeves.

725 - Negro/Black  
100 % Pol./Poly

Largo/length: 73 cm  
Talla/size: SP-XG / XS-XXXL



8259725

Ver más colores en página 100



8011900

**8011**

Casaca cuello mao manga corta. Tunic with mao collar, s/sleeve.

824 - Arena/Sand  
844 - Gris/Gray  
70 % Alg./Cotton  
30 % Pol./Poly



900 - Blanco/White  
67 % Pol./Poly  
33 % Alg./Cotton

Largo/length: 70 cm  
Talla/size: SP-XG / XS-XXXL



8011824



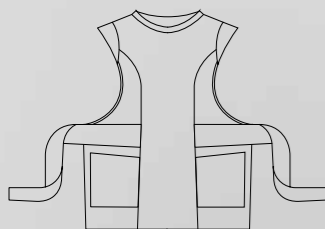
8011844

**8120**

Estola japonesa cuello barco y cinturón ancho. Japanese stole with neckline and wide belt.

709 - Arena / Sand  
725 - Negro/Black  
100% Pol./Poly

Largo/length: 76 cm  
Talla/size: Única / Unic



8120709



8120725

DYNEKE



8445700

**8445**

Chaqueta caballero vivo contraste y corchetes manga corta. Men's jacket with border trim contrast and snap fastener, s/sleeve.

700 - Blanco/White  
67 % Pol./Poly  
33 % Alg./Cotton

824 - Arena / Sand  
844 - Gris/Gray  
70% Alg./Cotton  
30% Pol./Poly



Largo/length: 76 cm  
Talla/size: SP-XG / XS-XXXL



8445824



8445844

dyneke.com

**8020**

Chaqueta sra. vivo blanco y corchetes manga corta. Women's jacket with white border trim and snap fastener, s/sleeve

824 - Arena / Sand  
70% Alg./Cotton  
30% Pol./Poly

Largo/length: 70 cm  
Talla/size: SP-XG / XS-XXXL



8020824

8445824

DYNEKE



8422700

**8422**

Kimono unisex cruzado con cintas m/caida. Unisex double-breasted kimono with ribbons, drooping sleeves.

700 - Blanco/White  
67 % Pol./Poly  
33 % Alg./Cotton

844 - Gris/Gray  
70% Alg./Cotton  
30 % Pol./Poly

Largo/length: 70 cm  
Talla/size: P-M-G / S-M-L



8422844



**8682**

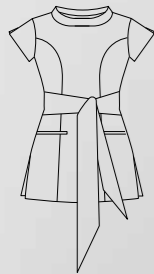
Vestido oriental cuello barco  
doble cinturón combinable.  
Oriental dress with  
changeable double belt.

844 - Gris/Gray  
502 - Rosa/Rose  
70% Alg./Cotton  
30 % Pol./Poly



586 - Blanco/White  
97% Alg./Cotton  
3% Elastano

Largo/length: 76 cm  
Talla/size: SP-XG / XS-XXXL



8682502



8682844



8682586

Ver combinaciones de  
pantalones en página  
48-55

DYNEKE



8604700



8604841



8681700



8680701

**8604**

Levita tabillas y corchetes  
manga 3/4. Frock coat with  
snap fasteners and 3/4  
sleeves..

700 - Blanco/White  
67 % Pol./Poly  
33 % Alg./Cotton  
841 - Negro/Black  
70 % Alg./Cotton  
30 % Pol./Poly  
Largo/length: 80 cm  
Talla/size: SP-XG / XS-XXXL



**8681**

Bata larga con vivo satén,  
manga 3/4. Long coat with  
satin border trim and snap  
fasteners, 3/4 sleeves.

700 - Blanco/White  
67 % Pol./Poly  
33 % Alg./Cotton  
Largo/length: 95 cm  
Talla/size: SP-XG / XS-XXXL



**8680**

Chaqueta vivo satén y  
corchetes, manga 3/4.  
Jacket with satin contrast  
and snap fasteners, 3/4  
sleeves.

701 - Negro/Black  
67 % Pol./Poly  
33 % Alg./Cotton  
Largo/length: 70 cm  
Talla/size: SP-XG / XS-XXXL



8649

Levita cuello ángulos y cremallera central. Frock coat with angle collar and central zip fastener.

700 - Blanco/White  
67 % Pol./Poly  
33 % Alg./Cotton

841 - Negro/Black  
844 - Gris/Gray  
70 % Alg./Cotton  
30% Pol./Poly



Largo/length: 80 cm  
Talla/size: SP-XG / XS-XXXL



8649841



8649700



8649844



DYNEKE

8617700



8617

Chaqueta estampado flor cruzada y botones. Double-breasted jacket with floral pattern and buttons.

700 - Blanco/White  
67 % Pol./Poly  
33 % Alg./Cotton

725 - Negro/Black  
100% Pol./Poly

Largo/length: 70 cm  
Talla/size: SP-XG / XS-XXXL



8617725

dyneke.com



La actitud lo es todo  
*Attitude is everything*

*Diane Von Furstenberg*



Sanidad

**8204**

Chaqueta pijama unisex cuello pico. Unisex V-neck scrub tunic.

- 795 - Burdeos/Burgundy
- 897 - Púrpura/Purple
- 859 - Violeta/Violet
- 896 - Malva/Mauve
- 794 - Marino/Navy
- 846 - Azulina/Blue
- 845 - Celeste/Light Blue
- 884 - Agua Marina/Aquamarine
- 701 - Negro/Black
- 851 - Mandarina/Orange
- 887 - Pistacho/Pistachio
- 847 - Verde/Green
- 67 % Pol./Poly
- 33 % Alg./Cotton
- Talla/size: SP-XG / XS-XXXL

- 700 - Blanco/White
- 67 % Pol./Poly
- 33 % Alg./Cotton
- Talla/size: 36-60

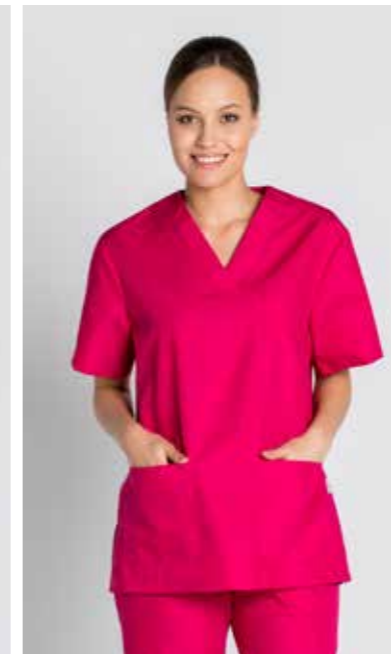
Largo/length: 73 cm



8204700



8204795



8204897



8204859



8204896



8204794



8204846



8204845



8204884



8204701



8204851



8204887



8204847

**8201**

Pantalón unisex con cinturilla elástica. Unisex trouser with elastic waist.

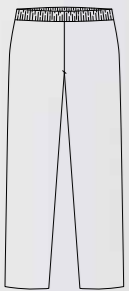
845 - Celeste/Light Blue  
 892 - Morado/Purple  
 795 - Burdeos/Burgundy  
 897 - Púrpura/Purple  
 859 - Violeta/Violet  
 846 - Azul/Blue  
 875 - Ducados/Blue ducats  
 884 - Agua Marina/Aquamarine  
 794 - Marino/Navy  
 847 - Verde/Green  
 701 - Negro/Black  
 896 - Malva/Mauve  
 851 - Mandarina/Orange  
 887 - Pistacho/Pistachio  
 854 - Verde/Green  
 67 % Pol./Poly  
 33 % Alg./Cotton

844 - Gris/Gray  
 824 - Arena/Sand  
 70 % Alg./Cotton  
 30 % Pol./Poly

Largo/length: 105 cm  
 Talla/size: SP-XG / XS-XXXL

700 - Blanco/White  
 70 % Pol./Poly  
 30 % Alg./Cotton

Largo/length: 105 cm  
 Talla/size: 36 - 60



8201845



8201892



8201795



8201897



8201859



8201851



8201846



8201875



8201884



8201896



8201794



8201847



8201854



8201887



8201701



8201844



8201824



8201700

**8255**

Chaqueta cuello pico con corchetes manga corta  
V-neck jacket with snap fastener, s/sleeve.

900 - Blanco/White  
67 % Pol./Poly  
33 % Alg./Cotton

Largo/length: 76 cm  
Talla/size: SP-XG / XS-XXXL

**8225**

Chaqueta cuello redondo con corchetes manga corta.  
Round collar jacket with snap fastener, s/sleeve.

900 - Blanco/White  
67 % Pol./Poly  
33 % Alg./Cotton

Largo/length: 76 cm  
Talla/size: SP-XG / XS-XXXL

**9929**

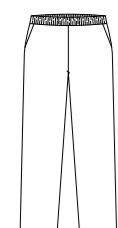
Pantalón unisex con cinturilla elástica y bolsillos.  
Unisex trousers with elastic waist and pockets.

900 - Blanco/White  
67 % Pol./Poly  
33 % Alg./Cotton

Largo/length: 108 cm  
Talla/size: 36 - 60

725 - Negro/Black  
100 % Pol./Poly

Largo/length: 108 cm  
Talla/size: SP-XG / XS-XXXL



8255900



8225900



9929725



9929900



8831700



8835700



8832700



8834700

**8831**

Chaqueta cuello solapa y botones, manga larga. Lapel collar tunic with buttons, l/ sleeve.

**8832**

Chaqueta cuello solapa y botones, manga corta. Lapel collar tunic with buttons, s/ sleeve.



700 - Blanco/White  
67 % Pol./Poly  
33 % Alg./Cotton

Largo/length: 80 cm  
Talla/size: SP-XG / XS-XXXL

**8835**

Chaqueta cuello pico y botones, manga larga.  
V-neck jacket with buttons, l/ sleeve

**8834**

Chaqueta cuello pico y botones, manga corta.  
V-neck jacket with buttons, s/sleeve



700 - Blanco/White  
67 % Pol./Poly  
33 % Alg./Cotton

Largo/length: 80 cm  
Talla/size: SP-XG / XS-XXXL

**8806**

Bata cbro. cuello solapa y botones, manga larga.  
Men's lapel collar coat with buttons, l/sleeve

900 - Blanco/White  
67 % Pol./Poly  
33 % Alg./Cotton

Largo/length: 97 cm  
Talla/size: 36 - 62

**8800**

Bata sra. cuello solapa y botones, manga larga.  
Women's lapel collar coat with buttons, l/sleeve

900 - Blanco/White  
67 % Pol./Poly  
33 % Alg./Cotton

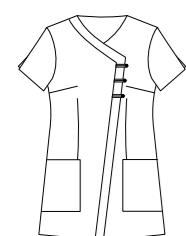
Largo/length: 95 cm  
Talla/size: SP-XG / XS-XXXL

**8216**

Bata larga presillas y botones, manga corta. Long coat with clips and buttons, s/sleeve.

700 - Blanco/White  
67 % Pol./Poly  
33 % Alg./Cotton

Largo/length: 84 cm  
Talla/size: SP-XG / XS-XXXL



8806900



8800900



8290700



8217700



8216700



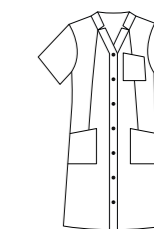
8218700



8681700

**8290**

Bata larga entallada con corchetes manga corta.  
Long coat with snap fastener, s/sleeve.

**8217**

Bata cuello pico y corchetes, manga larga. V-neck coat with snap fastener, l/sleeve.



700 - Blanco/White  
67 % Pol./Poly  
33 % Alg./Cotton

Largo/length: 95 cm  
Talla/size: SP-XG / XS-XXXL

**8218**

Bata larga cuello mao y corchetes, manga larga.  
Long coat with mao collar, snap fastener, l/sleeve.

**8681**

Bata larga con vivo satén, manga 3/4. Long coat with satin contrast, 3/4 sleeve.



700 - Blanco/White  
67 % Pol./Poly  
33 % Alg./Cotton

Largo/length: 95 cm  
Talla/size: SP-XG / XS-XXXL

**8814**

Chaqueta americana sra.  
con solapas. Women's  
blazer with lapels.

586 - Blanco/White  
97% Alg./Cotton  
3% Elastan / Elast

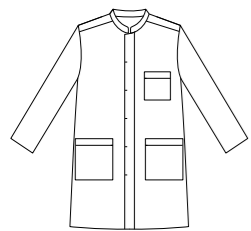
Largo/length: 68 cm  
Talla/size: SP-XG / XS-XXXL

**8810**

Levita cbro. con corchetes  
ocultos en tapeta. Men's  
frock coat with hidden snap  
fastener.

586 - Blanco/White  
97% Alg./Cotton  
3% Elastan / Elast

Largo/length: 97 cm  
Talla/size: SP-XG / XS-XXXL



8814586 / 8810586



8516700

8515700



8514700



8517700

**8516**

Chaqueta sra. cuello mao  
y corchetes, manga larga.  
Women's jacket with mao  
collar and snap fastener, l/  
sleeve.

Largo/length: 70 cm

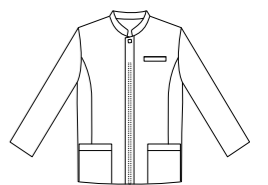
**8515**

Chaqueta cbro. cuello mao  
y corchetes, manga corta.  
Men's jacket with mao collar  
and snap fastener, s/sleeve.

Largo/length: 76 cm

**8514**

Chaqueta cbro. cuello mao  
y corchetes, manga larga.  
Men's jacket with mao collar  
and snap fastener, l/sleeve  
Largo/length: 76 cm

**8517**

Chaqueta sra. cuello mao  
y corchetes, manga corta.  
Women's jacket with mao  
collar and snap fastener, s/  
sleeve.

Largo/length: 70 cm



700 - Blanco/White  
67 % Pol./Poly  
33 % Alg./Cotton

Talla/size: SP-XG / XS-XXXL

**8207**

Chaqueta cbro. botones y cuello mao, manga corta.  
Men's jacket with buttons and mao collar, s/sleeve

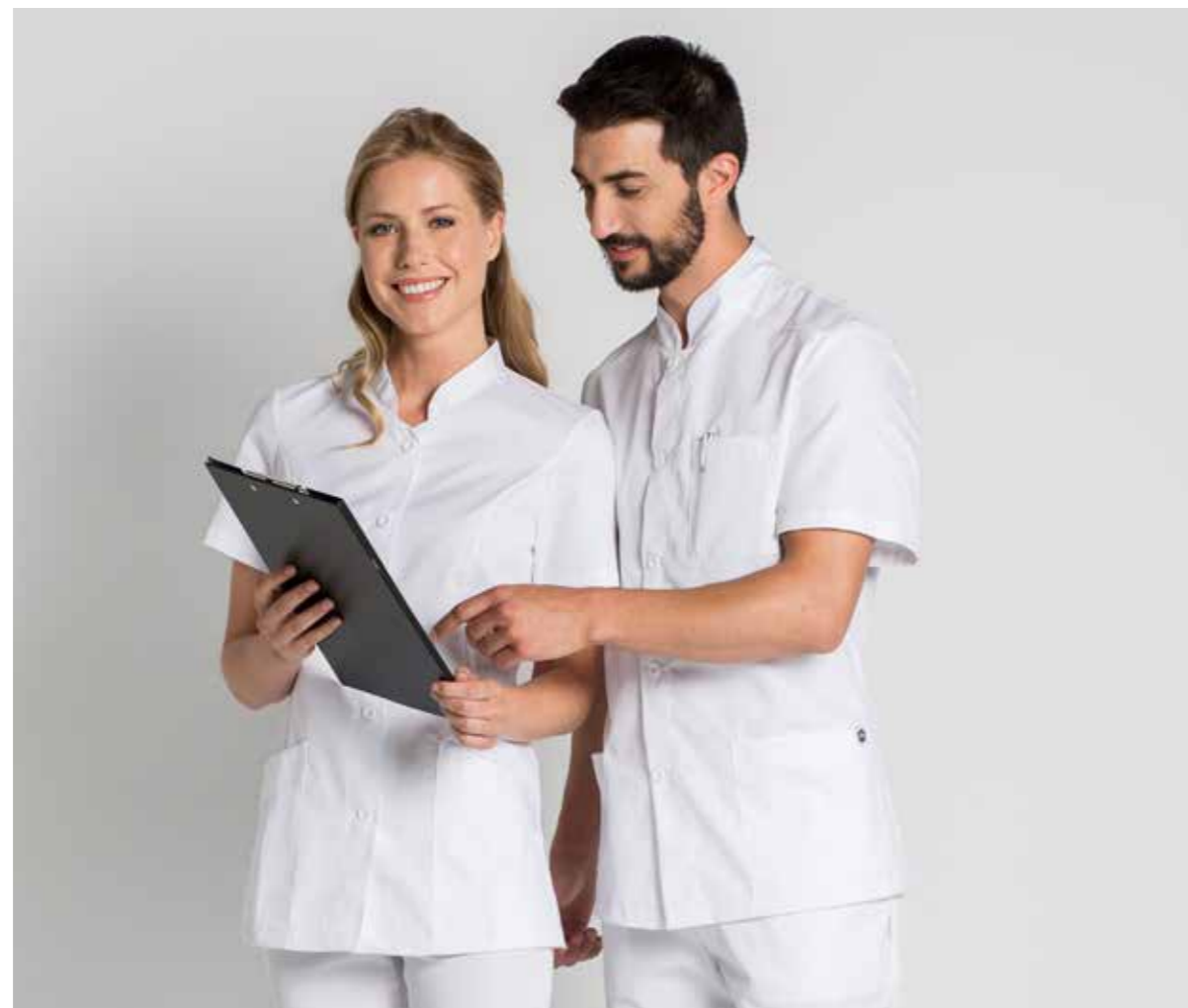
**8208**

Chaqueta cbro. botones y cuello mao, manga larga.  
Men's jacket with buttons and mao collar, l/sleeve.



900 - Blanco/White  
67 % Pol./Poly  
33 % Alg./Cotton

Largo/length: 76 cm  
Talla/size: SP-XG / XS-XXXL



8295900

8207900

**8295**

Chaqueta sra. cuello mao y botones, manga corta.  
Women's jacket with mao collar and buttons, s/sleeve

**8296**

Chaqueta sra. cuello mao y botones, manga larga.  
Women's jacket with mao collar and buttons, l/sleeve



900 - Blanco/White  
67 % Pol./Poly  
33 % Alg./Cotton

Largo/length: 70 cm  
Talla/size: SP-XG / XS-XXXL



8208900

8296900



8254900

8253900

**8253**

Chaqueta unisex con cuello tirilla y corchetes, manga corta  
Unisex jacket with mao collar and snap fastener, s/sleeve

**8254**

Chaqueta unisex con cuello tirilla y corchetes, manga larga  
Unisex jacket with mao collar and snap fastener, l/sleeve.



900 - Blanco/White  
67 % Pol./Poly  
33 % Alg./Cotton

Largo/length: 73 cm  
Talla/size: SP-XG / XS-XXXL

**8229**

Chaqueta unisex con cremallera, manga corta.  
Unisex jacket with zip fastener, s/sleeve

**8230**

Chaqueta unisex con cremallera, manga larga.  
Unisex jacket with zip fastener, l/sleeve.



900 - Blanco/White  
67 % Pol./Poly  
33 % Alg./Cotton

Largo/length: 73 cm  
Talla/size: SP-XG / XS-XXXL



8230900

8229900

**8021**

Chaqueta sra. vivo pistacho y corchetes manga larga. Women's jacket pistachio satin and snap fastener, l/sleeve.

700 - Blanco/White  
67 % Pol./Poly  
33 % Alg./Cotton

Largo/length: 70 cm  
Talla/size: SP-XG / XS-XXXL



8021700

**8250**

Chaqueta caballero corchetes y respuntes pistacho manga larga. Men's jacket with snap fastener and pistachio satin, l/sleeve.

700 - Blanco/White  
67 % Pol./Poly  
33 % Alg./Cotton

Largo/length: 80 cm  
Talla/size: SP-XG / XS-XXXL



8250700



8021700

Ver más opciones de color en pág. 74

Ver combinaciones de pantalones en página 48-55

8211844



8215844

**8445**

Chaqueta caballero con contraste gris y corchete manga corta. Men's jacket with contrast and snap fastener, s/sleeve.

700 - Blanco/White  
67 % Pol./Poly  
33 % Alg./Cotton

Largo/length: 76 cm  
Talla/size: SP-XG / XS-XXXL



8445700

**8211**

Chaqueta sra con contraste en hombros y cremallera manga corta. Women's jacket shoulder and zip contrast, s/sleeve.

844 - Gris/Gray  
67 % Pol./Poly  
33 % Alg./Cotton  
Largo/length: 70 cm  
Talla/size: SP-XG / XS-XXXL

**8215**

Chaqueta sra. hombros y cremallera ctte. manga larga Women's jacket shoulder and zip contrast, l/sleeve.

844 - Gris/Gray  
859 - Violeta/violet  
67 % Pol./Poly  
33 % Alg./Cotton  
Largo/length: 70 cm  
Talla/size: SP-XG / XS-XXXL





**8250**

Chaqueta cbro. corchetes y contraste hombros manga larga. Men's jacket with snap fastener and shoulder contrast, l/sleeve.

859 - Violeta/violet  
67 % Pol./Poly  
33 % Alg./Cotton

Largo/length: 80 cm  
Talla/size: SP-XG / XS-XXXL

**8215**

Chaqueta sra. hombros y cremallera contraste manga larga. Women's jacket shoulder and zip contrast, l/sleeve.

859 - Violeta/violet  
67 % Pol./Poly  
33 % Alg./Cotton

Largo/length: 70 cm  
Talla/size: SP-XG / XS-XXXL

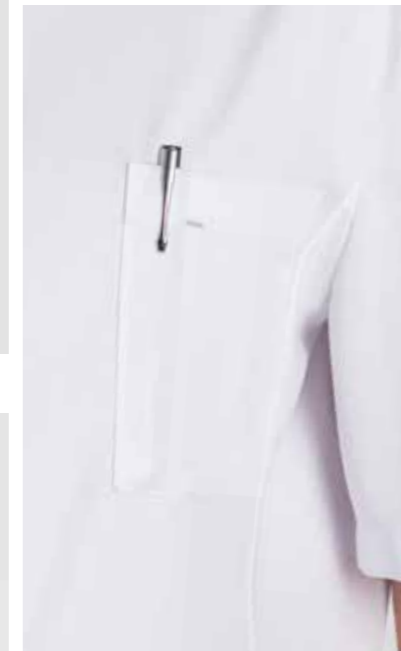


8250859 / 8215859

Ver combinaciones de pantalones en página 48-55



8251700

**8251**

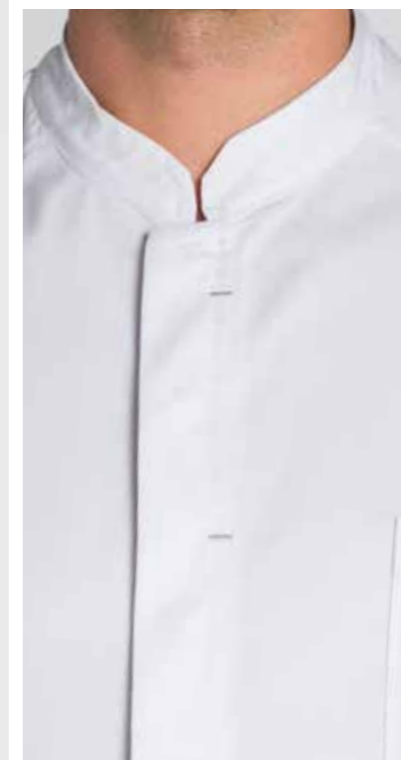
Chaqueta cbro. cuello mao y corchetes, manga corta Men's jacket with mao collar and snap fastener, s/sleeve.

700 - Blanco/White  
67 % Pol./Poly  
33 % Alg./Cotton

Largo/length: 78 cm  
Talla/size: SP-XG / XS-XXXL



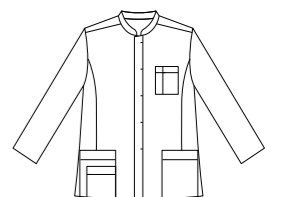
8252700

**8252**

Chaqueta cbro. cuello mao y corchetes, manga larga Men's jacket with mao collar and snap fastener, l/sleeve.

700 - Blanco/White  
67 % Pol./Poly  
33 % Alg./Cotton

Largo/length: 78 cm  
Talla/size: SP-XG / XS-XXXL



**8151**

Chaqueta sra. con corchetes y bolsillos ocultos, manga corta. Women's jacket with snap fastener, hidden pockets, s/sleeve.

700 - Blanco/White  
67 % Pol./Poly  
33 % Alg./Cotton

Largo/length: 70 cm  
Talla/size: SP-XG / XS-XXXL

**8152**

Chaqueta sra. con corchetes y bolsillos ocultos, manga larga. Women's jacket with snap fastener, hidden pockets, l/sleeve.

700 - Blanco/White  
67 % Pol./Poly  
33 % Alg./Cotton

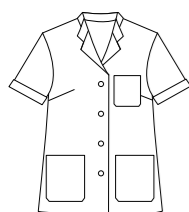
Largo/length: 70 cm  
Talla/size: SP-XG / XS-XXXL

**8202**

Chaqueta sra. cuello solapa y botones manga corta. Women's jacket with lapel collar and buttons, s/sleeve.

700 - Blanco/White  
67 % Pol./Poly  
33 % Alg./Cotton

Largo/length: 75 cm  
Talla/size: 36 - 62



8151700



8152700



8202700



8674700



8275700



8211700



8215700

**8674**

Chaqueta sra. cuello asimétrico y corchetes manga larga Women's jacket asymmetrical collar, snap fastener, l/sleeve.

700 - Blanco/White  
67 % Pol./Poly  
33 % Alg./Cotton

**8275**

Chaqueta sra. cuello ángulos y corchetes manga larga Women's jacket, angle collar and snap fastener, l/sleeve.

**8211**

Chaqueta sra. cuello cruzado y cremallera manga corta Women's jacket double-breasted collar and zipper, s/sleeve.

**8215**

Chaqueta sra. cuello cruzado y cremallera manga larga. Women's jacket double-breasted collar and zipper, l/sleeve.



700 - Blanco/White  
67 % Pol./Poly  
33 % Alg./Cotton

Largo/length: 70 cm  
Talla/size: SP-XG / XS-XXXL

**8298**

Casaca sra. con cuello pico y cremallera manga 3/4  
V-neck, women's scrub tunic with zip fastener and 3/4 sleeve.

502 - Rosa/Pink  
511 - Celeste/Light Blue  
70 % Pol./Poly  
30 % Alg./Cotton

700 - Blanco/White  
67 % Pol./Poly  
33 % Alg./Cotton

Largo/length: 70 cm  
Talla/size: SP-XG / XS-XXXL



8298502



Ver más colores en página 71

8011502

**8011**

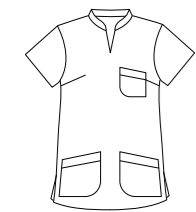
Casaca sra. con cuello mao manga corta. Women's scrub tunic with mao collar, s/sleeve.

900 - Blanco/White  
67 % Pol./Poly  
33 % Alg./Cotton

502 - Rosa/Rose  
511 - Celeste/Light Blue  
70 % Alg./Cotton  
30 % Pol./Poly



Largo/length: 70 cm  
Talla/size: SP-XG / XS-XXXL



8298511



8298700



8011511



8011900



8238875

**8238**

Chaqueta sra. cuello curvo y corchetes manga corta.  
Women's rounded collar jacket with snap fastener, s/sleeve.

875 - Ducados/Blue ducats  
67 % Pol./Poly  
33 % Alg./Cotton  
Largo/length: 70 cm  
Talla/size: SP-XG / XS-XXXL



Combinables con pantalones en página 85



8289854

**8289**

Chaqueta sra. dos vivos y corchetes manga corta.  
Women's jacket with contrasts and snap fastener, s/sleeve.

701 - Gris/Gray  
846 - Azul/Blueina  
892 - Vino/Red wine  
854 - Verde/Green  
67 % Pol./Poly  
33 % Alg./Cotton

Largo/length: 70 cm  
Talla/size: SP-XG / XS-XXXL



8289701



8289846



8289892

**8294**

Chaqueta sra. cuello alto y cremallera ctral. manga larga. Women's long neck jacket with central zip fastener, l/sleeve.

700 - Blanco/White  
794 - Azul/Blue  
859 - Violeta/violet  
873 - Verde/Green  
67 % Pol./Poly  
33 % Alg./Cotton

Largo/length: 70 cm  
Talla/size: SP-XG / XS-XXXL



8294700



8294794



8294859



8294873

DYNEKE

Combinables con pantalones en página 85



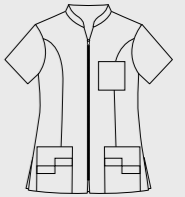
dyneke.com

**8293**

Chaqueta sra. cuello alto y cremallera ctral. manga corta. Women's long neck jacket with central zip fastener, s/sleeve.

700 - Blanco/White  
794 - Azul/Blue  
859 - Violeta/violet  
873 - Verde/Green  
67 % Pol./Poly  
33 % Alg./Cotton

Largo/length: 70 cm  
Talla/size: SP-XG / XS-XXXL



8293700



8293794

8293859



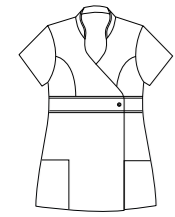
8293873

**8299**

Chaqueta sra. vivo raso y corchete manga corta. Women's jacket with satin and snap fastener, s/sleeve.

892 - Vino/Red wine  
854 - Verde/Green  
67 % Pol./Poly  
33 % Alg./Cotton

Largo/length: 68 cm  
Talla/size: SP-XG / XS-XXXL



8299892



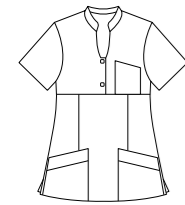
8299854

**8024**

Casaca sra. cerrada botones en canesú manga corta. Women's scrub tunic fastened up with buttons and bodice, s/sleeve.

845 - Celeste/Light Blue  
900 - Blanco/White  
67 % Pol./Poly  
33 % Alg./Cotton

Largo/length: 68 cm  
Talla/size: SP-XG / XS-XXXL



8024845



8024900

\* Opciones de color bajo pedido  
\* Color options upon request



8204819

**8204**

Blusón estampado unisex. Unisex patterned tunic.

819 - Est.azul/Pattern blue  
100% Alg./Cotton

Largo/length: 73 cm  
Talla/size: SP-XG / XS-XXXL

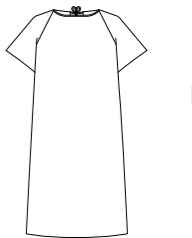


**8200**

Bata paciente con cintas traseras. Patient coat with back straps.

898 - Blanco/White  
65% Pol./Poly  
35 % Alg./Cotton

Largo/length: 111 cm  
Talla/size: Única / Unic



POPELIN

**8241**

Chaqueta de embarazada con corchete. Pregnancy tunic with snap fasteners.

700 - Blanco/White  
67% Pol./Poly  
33 % Alg./Cotton

Largo/length: 80 cm  
Talla/size: SP-XG / XS-XXXL



8200898



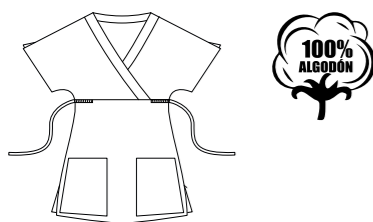
8241700

**8015**

Casaca estampada con frunce en pecho manga corta.  
Patterned tunic, s/sleeve.

450 - Est.marron / brown print  
451 - Est.celeste / sky print  
452 - Est.rosa / pink print  
100% Alg./Cotton

Largo/length: 75 cm  
Talla/size: SP-XG / XS-XXXL



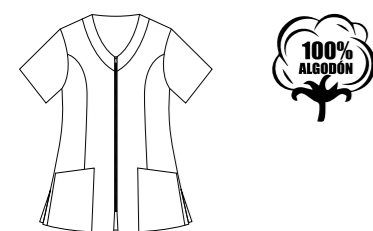
8015450

**8016**

Chaqueta estampada con cremallera manga corta  
Patterned jacket with zip fastener, s/sleeve.

814 - Est.floral/printed flowers  
892 - Est.topos/stamped circles  
100% Alg./Cotton

Largo/length: 70 cm  
Talla/size: SP-XG / XS-XXXL



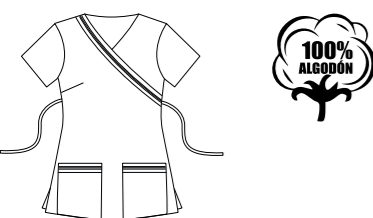
8017914

**8017**

Casaca estampado flores manga corta. Floral  
patterned jacket, s/sleeve

914 - Est.marengo/dark gray  
print  
100 % Alg./Cotton

Largo/length: 70 cm  
Talla/size: SP-XG / XS-XXXL



8017914



8015451



8015452



8016892



8016814



8022904



8022905



8023902



8023905



8022902



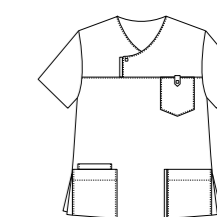
8023904

**8022**

Casaca sanitaria hombre  
cuello con abertura  
corchete. Men's tunic with  
snap fastener opening, s/  
sleeve.

902 - Marino/Navy  
904 - Morado/Purple  
905 - Gris/Gray  
97 % Alg./Cotton  
3 % Elastan

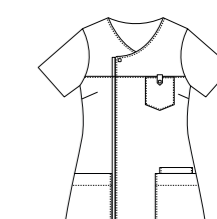
Largo/length: 76 cm  
Talla/size: SP-XG / XS-XXXL

**8023**

Casaca sanitaria mujer  
cuello con abertura  
corchete. Women's tunic  
with snap fastener opening,  
s/sleeve.

902 - Marino/Navy  
904 - Morado/Purple  
905 - Gris/Gray  
97 % Alg./Cotton  
3 % Elastan

Largo/length: 70 cm  
Talla/size: SP-XG / XS-XXXL

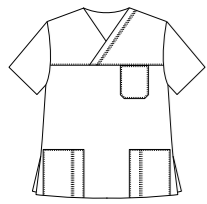


**8018**

Casaca cbro. cuello pico  
manga corta. Men's V-neck  
tunic, s/sleeve.

- 901 - Negro/Black
- 902 - Marino/Navy
- 903 - Marrón/Brown
- 911 - Fucsia/Fuchsia
- 912 - Turquesa/Turquoise
- 913 - Pistacho/Pistachio
- 97 % Algodón/Cotton
- y 3 % Elastano

Largo/length: 74 cm  
Talla/size: SP-XG / XS-XXXL



8018901



8018911



8018902



8017902



8017901



8017911

**8017**

Casaca sra. con cintas  
ajustables manga corta.  
Women's tunic with strap to  
fit, s/sleeve.

- 901 - Negro/Black
- 902 - Marino/Navy
- 903 - Marrón/Brown
- 911 - Fucsia/Fuchsia
- 912 - Turquesa/Turquoise
- 913 - Pistacho/Pistachio
- 97 % Alg./Cotton
- 3 % Elastan

Largo/length: 70 cm  
Talla/size: SP-XG / XS-XXXL



8018912



8018903



8018913



8017912



8017913



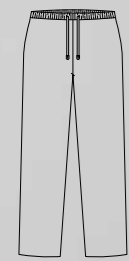
8017903

8019

Pantalón unisex cintura elástica y cinta para ajustar. Unisex trousers with elastic waist and strap to fit

- 901 - Negro/Black
- 902 - Marino/Navy
- 903 - Marrón/Brown
- 911 - Fucsia/Fuchsia
- 912 - Turquesa/Turquoise
- 913 - Pistacho/Pistachio
- 97 % Alg./Cotton
- 3 % Elastan

Largo/length: 108 cm  
Talla/size: SP-XG / XS-XXXL



8019912



8019913



8019903



8019911



8019901



8019902

DYNEKE



8487001



8487002



8487914



8487003



8487006



8487007



8487903



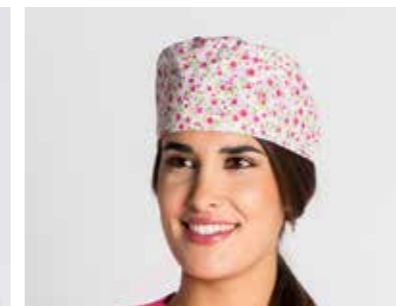
8487911



8487912



8487913



8487004



8487005



8487819



8487902



8487904



8487905



8487901

8487

Gorro sanitario unisex. Unisex health cap.

- 001 - Est.marron/Pat.brown
- 002 - Est.rosa/Pat. pink
- 003 - Est.celeste/Pat. blue
- 006 - Est.floral/Pat. flower
- 007 - Est.topos/Pat. tops
- 819 - Est.azul/Pattern blue
- 914 - Est.marengo/Pattern dark-gray
- 004 - Est.rosa/Pattern pink
- 005 - Est.azul/Pattern blue
- 100 % Alg./Cotton



- 901 - Negro/Black
- 902 - Marino/Navy
- 903 - Marrón/Brown
- 911 - Fucsia/Fuchsia
- 912 - Turquesa/Turquoise
- 913 - Pistacho/Pistachio
- 904 - Morado/Purple
- 905 - Gris/Gray
- 97 % Alg./Cotton
- 3 % Elastan

Talla/size: Única / Unic





Tener elegancia no significa  
destacarse, sino ser recordado.  
*"To have elegance does not mean to  
stand out, but to be remembered"*

*Giorgio Armani*

# Hostelería



**8440**

Chaqueta básica cocinero con doble botonadura manga larga. Basic chef's /sleeve jacket with double buttons.

700 - Blanco/White  
701 - Negro/Black  
67 % Pol./Poly  
33 % Alg./Cotton

Largo/length: 74 cm  
Talla/size: SP-XG / XS-XXXL



8440700



8440701



8441700



8441701

**8441**

Chaqueta cocinero con doble botonadura manga corta. Chef's s/sleeve jacket with double buttons.

700 - Blanco/White  
701 - Negro/Black  
67 % Pol./Poly  
33 % Alg./Cotton

Largo/length: 74 cm  
Talla/size: SP-XG / XS-XXXL



8508839



**8508**

Chaqueta popelin cocina cruzada con doble corchete. Chef's poplin jacket with double snap fastener.

838 - Blanco/White  
839 - Negro/Black  
100 % Alg./Cotton

Largo/length: 76 cm  
Talla/size: SP-XG / XS-XXXL



POPELIN



8508838

**8518**

Chaqueta chef con corchetes. Chef's snap fastener jacket.

700 - Blanco/White  
701 - Negro/Black  
721 - Rojo/Red  
67 % Pol./Poly  
33 % Alg./Cotton

Largo/length: 76 cm  
Talla/size: SP-XG / XS-XXXL



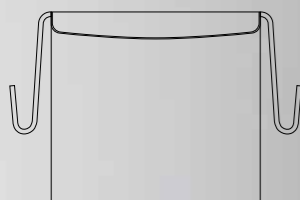
8518701

**8427**

Delantal francés con sopata. Long apron with fold-over front.

700 - Blanco/White  
701 - Negro/Black  
721 - Rojo/Red  
67 % Pol./Poly  
33 % Alg./Cotton

Largo/length: 90 cm  
Ancho/width: 101 cm  
Talla/size: Única/ One size



8427701

DYNEKE



8518721

8427721



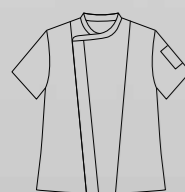
8518700

**8510**

Chaqueta cruzada cocinero con corchetes manga corta.  
Crossed chef's s/sleeve snap fastener jacket.

700 - Blanco/White  
701 - Negro/Black  
67 % Pol./Poly  
33 % Alg./Cotton

Largo/length: 76 cm  
Talla/size: SP-XG / XS-XXXL



8510701



8510700

**8509**

Chaqueta cruzada cocinero con corchetes en tapeta.  
Crossed chef's snap fastener jacket.

700 - Blanco/White  
701 - Negro/Black  
67 % Pol./Poly  
33 % Alg./Cotton

777 - Negro/Black  
60 % Pol./Poly  
40 % Alg./Cotton

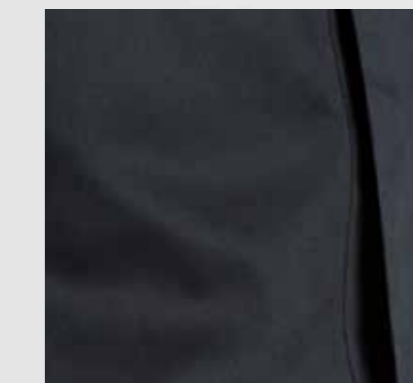
Largo/length: 76 cm  
Talla/size: SP-XG / XS-XXXL



8509700



8509701



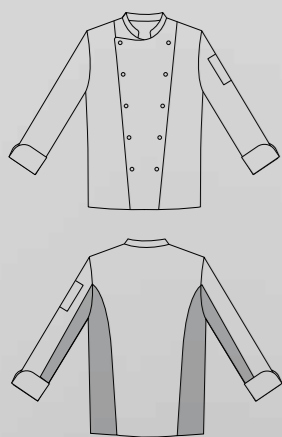
8509777

**8526**

Chaqueta gran chef con doble botonadura.  
Great chef's jacket with double buttons.

834 - Blanco/White  
100% Alg./Cotton

Largo/length: 76 cm  
Talla/size: SP-XG / XS-XXXL



Bordado en bolsillo  
Embroidery in pocket



Hecho a mano  
Handmade



8526834

**8524**

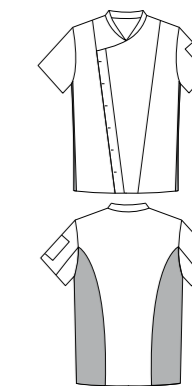
Chaqueta cocinero con "cool dry" en costadillos. Chef's jacket with "cool dry".

700 - Blanco/White  
701 - Negro/Black  
67 % Pol./Poly  
33 % Alg./Cotton

844 - Gris/Gray  
70% Alg./Cotton  
30% Pol./Poly



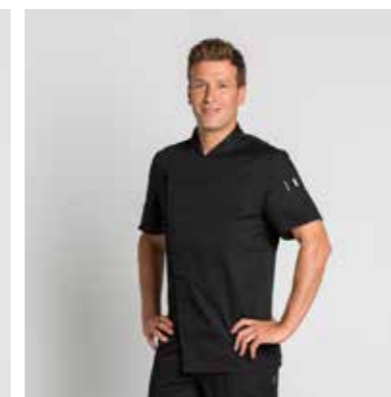
Largo/length: 76 cm  
Talla/size: SP-XG / XS-XXXL



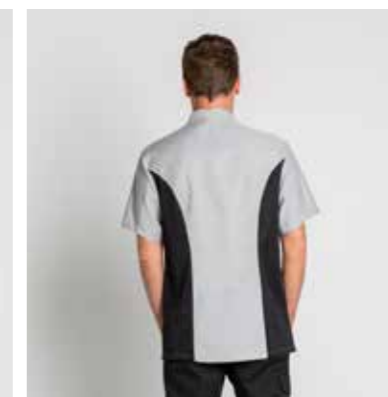
8524844



8524700



8524701



8524844

8538

Chaqueta camisera entallada con "cool dry" Chef's shirt with "cool dry" side.

586 - Blanco/White  
587 - Negro/Black  
97% Alg./Cotton  
3% Elast.

Largo/length: 76 cm  
Talla/size: SP-XG / XS-XXXL



8538586



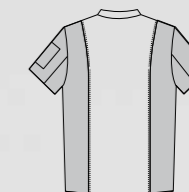
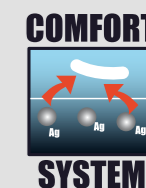
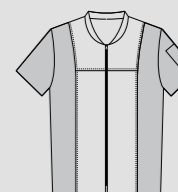
8538587



8568701



8568700



8568

Chaqueta cocinero con cremallera. Chef's jacket with zip fastening.

700 - Blanco/White  
701 - Negro/Black  
67% Pol./Poly  
33% Alg./Cotton

Largo/length: 75 cm  
Talla/size: SP-XG / XS-XXXL

**8521**

Chaqueta básica de cocinera con doble botonadura.  
Women's chef jacket with double button.

700 - Blanco/White  
701 - Negro/Black  
67 % Pol./Poly  
33 % Alg./Cotton

Largo/length: 68 cm  
Talla/size: SP-XG / XS-XXXL



8521700



8521701



DYNEKE

**8519**

Chaqueta cocinera con doble línea de corchetes. Women's chef jacket with double snap fasteners.

700 - Blanco/White  
701 - Negro/Black  
67 % Pol./Poly  
33 % Alg./Cotton

844 - Gris/Gray  
70 % Alg./Cotton  
30% Pol./Poly



Largo/length: 68 cm  
Talla/size: SP-XG / XS-XXXL



8519844



dyneke.com



8519701



8519700

**8570**

Chaqueta mujer hostelería con corchetes manga corta. Women's s/sleeve jacket with snap fasteners.

520 - Blanco/White  
64% Pol./Poly  
33% Alg./Cotton  
3% Elastan/Elast.

Largo/length: 68 cm  
Talla/size: SP-XG / XS-XXXL



**8569**

Chaqueta hombre hostelería con corchetes manga corta. Men's s/sleeve jacket with snap fasteners.

520 - Blanco/White  
64% Pol./Poly  
33% Alg./Cotton  
3% Elastan/Elast.

Largo/length: 76 cm  
Talla/size: SP-XG / XS-XXXL



8570520

8569520

8574520

8573520



**8574**

Chaqueta hombre hostelería con corchetes manga larga. Men's l/sleeve jacket with snap fasteners.

520 - Blanco/White  
64% Pol./Poly  
33% Alg./Cotton  
3% Elastan/Elast.

Largo/length: 76 cm  
Talla/size: SP-XG / XS-XXXL



**8573**

Chaqueta mujer hostelería con corchetes manga larga. Women's l/sleeve jacket with snap fasteners.

520 - Blanco/White  
64% Pol./Poly  
33% Alg./Cotton  
3% Elastan/Elast.

Largo/length: 68 cm  
Talla/size: SP-XG / XS-XXXL





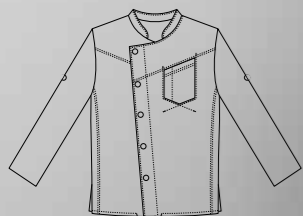
8539

Chaqueta de chef con  
paspuntes y botones oxi  
manga larga. Chef' jacket  
with oxi buttons.

701 - Negro/Black  
67 % Pol./Poly  
33 % Alg./Cotton

700 - Blanco/White  
67 % Pol./Poly  
33 % Alg./Cotton

Largo/length: 76 cm  
Talla/size: SP-XG / XS-XXXL



8539701

8532701

DYNEKE



8539700

8532700

8532700

dyneke.com

8532

Chaqueta de cocinera doble  
botón decapado. Women's  
chef jacket with double worn  
button.

700 - Blanco/White  
67 % Pol./Poly  
33 % Alg./Cotton

701 - Negro/Black  
67 % Pol./Poly  
33 % Alg./Cotton

Largo/length: 68 cm  
Talla/size: SP-XG / XS-XXXL



8422

Kimono unisex cruzado con cintas m/caida. Unisex's kimono with straps fastening.

700 - Blanco/White  
67 % Pol./Poly  
33 % Alg./Cotton

844 - Gris/Gray  
70 % Alg./Cotton  
30% Pol./Poly



Largo/length: 70 cm  
Talla/size: P-M-G / S-M-L



8422844

DYNEKE



8433701

dyneke.com

8533

Kimono unisex cruzado con cintas m/caida. Unisex's kimono with straps fastening.

701 - Negro/Black  
67 % Pol./Poly  
33 % Alg./Cotton

Largo/length: 70 cm  
Talla/size: P-M-G / S-M-L



**8540**

Pantalón cocinero con cordón. Chef pants with drawstring elastic waist.

685 - Cuadro Azul Marino  
701 - Negro/Black  
67 % Pol./Poly  
33 % Alg./Cotton

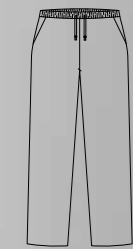
837 - Raya Negra  
55 % Pol./Poly  
45 % Alg./Cotton

635 - Cuadro Negro-gris  
70 % Pol./Poly  
30 % Alg./Cotton

Largo/length: 107 cm  
Talla/size: SP-XG / XS-XXXL

741 - Pata gallo/Gallop  
67 % Pol./Poly  
33 % Alg./Cotton

Largo/length: 107 cm  
Talla/size: SP-XG/XS-XXXL



8540685



8540701



8540741



8540837

8540635

Ver pantalones de mujer en página 48-51

DYNEKE



8485701



8485837



8542701



8542916

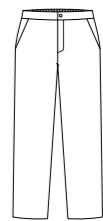
**8485**

Pantalón de caballero para hostelería. Chef pants.

701 - Negro/Black  
67 % Pol./Poly  
33 % Alg./Cotton

837 - Rayas Negro  
55 % Pol./Poly  
45 % Alg./Cotton

Largo/length: 113 cm  
Talla/size: 36 - 62



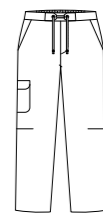
**8542**

Pantalón caballero trinchas con cinta. Chef pants with drawstring elastic waist.

701 - Negro/Black  
67 % Pol./Poly  
33 % Alg./Cotton

916 - Rayas Marino  
70 % Alg./Cotton  
30 % Pol./Poly

Largo/length: 107 cm  
Talla/size: SP-XG / XS-XXXL



**8515**

Chaqueta caballero cierre corchete con sopata manga corta. Men tunic with snap fastener and front lapel s/sleeve.

701 - Negro/Black  
67 % Pol./Poly  
33 % Alg./Cotton

Largo/length: 76 cm  
Talla/size: SP-XG / XS-XXXL

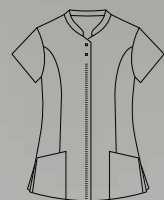


**8517**

Chaqueta mujer cierre corchete con sopata manga corta. Women tunic with snap fastener and front lapel s/sleeve.

701 - Negro/Black  
67 % Pol./Poly  
33 % Alg./Cotton

Largo/length: 70 cm  
Talla/size: SP-XG / XS-XXXL



DYNEKE

8514701



**8514**

Chaqueta caballero cierre corchete con sopata manga larga. Men tunic with snap fastener and front lapel l/sleeve.

701 - Negro/Black  
67 % Pol./Poly  
33 % Alg./Cotton

Largo/length: 76 cm  
Talla/size: SP-XG / XS-XXXL



**8516**

Chaqueta mujer cierre corchete con sopata manga larga. Women tunic with snap fastener and front lapel l/sleeve.

701 - Negro/Black  
67 % Pol./Poly  
33 % Alg./Cotton

Largo/length: 70 cm  
Talla/size: SP-XG / XS-XXXL



**8295**

Chaqueta básica mujer con botones. Women m/sleeve jacket with buttons.

725 - Negro/Black  
100% Pol./Poly

Largo/length: 70 cm  
Talla/size: SP-XG / XS-XXXL



8295725



8207725

**8207**

Chaqueta básica hombre con botones manga corta. Men s/sleeve jacket with buttons.

725 - Negro/Black  
100% Pol./Poly

Largo/length: 76 cm  
Talla/size: SP-XG / XS-XXXL



8296725



8208725

**8296**

Chaqueta básica mujer con botones. Women l/sleeve jacket with buttons.

725 - Negro/Black  
100% Pol./Poly

Largo/length: 70 cm  
Talla/size: SP-XG / XS-XXXL



**8208**

Chaqueta básica hombre con botones manga larga. Men l/sleeve jacket with buttons.

725 - Negro/Black  
100% Pol./Poly

Largo/length: 76 cm  
Talla/size: SP-XG / XS-XXXL



**8253**

Chaqueta unisex cuello tirilla y corchetes manga corta. Thin collar unisex tunic and snap fastener s/sleeve

725 - Negro/Black  
100% Pol./Poly

8254725

Largo/length: 73 cm  
Talla/size: SP-XG / XS-XXXL



8253725

**8254**

Chaqueta unisex cuello tirilla y corchetes manga larga. Thin collar unisex tunic and snap fastener l/sleeve

725 - Negro/Black  
100% Pol./Poly

Largo/length: 73 cm  
Talla/size: SP-XG / XS-XXXL



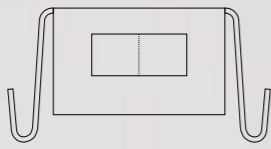
**8461**

Delantal con bolsillo central divisorio. Apron with central pocket.

- 725 - Negro/Black**  
100 % Pol./Poly
- 701 - Negro/Black**
- 700 - Blanco/White**
- 795 - Burdeos/Bourdeaux**
- 790 - Pistacho/Pistachio**
- 791 - Naranja/Orange**  
70 % Pol./Poly  
30 % Alg./Cotton

**837 - Rayas Negro/Black stripes**  
55 % Pol./Poly  
45 % Alg./Cotton

Largo/Lenght: 46 cm  
Ancho/Width: 76 cm  
Talla/size: Única/ One size



8461701



8461700

8461837



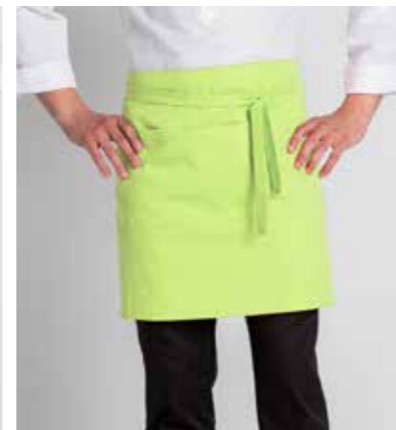
8461725



8461791



8461795



8461790



8465795



8465725



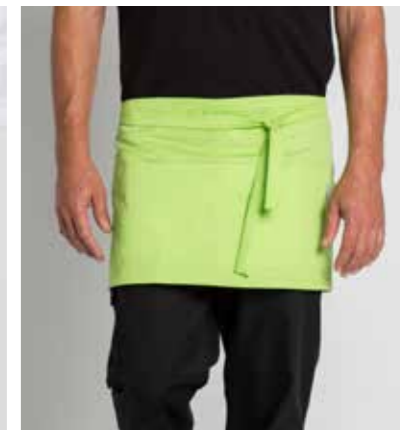
8461791



8465700



8465791



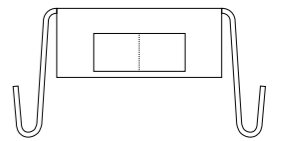
8465790

**8465**

Delantal corto con bolsillo central divisorio. Short apron with central pocket.

- 725 - Negro/Black**  
100 % Pol./Poly
- 700 - Blanco/White**
- 795 - Burdeos/Bourdeaux**
- 790 - Pistacho/Pistachio**
- 791 - Naranja/Orange**  
70 % Pol./Poly  
30 % Alg./Cotton

Largo/Lenght: 31 cm  
Ancho/Width: 76 cm  
Talla/size: Única/ One size





8426795



8426791



8426837



8426900



8426701



8426725



8426790

**8426**

Delantal envolvente con peto. Bib apron.

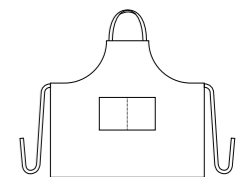
701 - Negro/Black  
67 % Pol./Poly  
33 % Alg./Cotton

900 - Blanco/White  
795 - Burdeos/Bourdeaux  
790 - Pistacho/Pistachio  
791 - Naranja/Orange  
70% Pol./Poly  
30% Alg./Cotton

725 - Negro/Black  
100 % Pol./Poly

837 - Rayas Negro/Black stripes  
55 % Pol./Poly  
45 % Alg./Cotton

Largo/Lenght: 88 cm  
Ancho/Width: 100 cm  
Tallas/sizes: Única/ One size



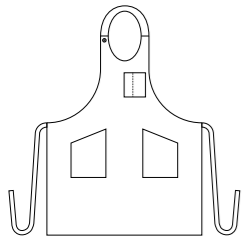


**8460**

Delantal con peto tirantes ajustables. Adjustable bib apron.

105 - Negro/Black  
100 % Pol./Poly

Largo/Lenght: 100 cm  
Ancho/Width: 80 cm  
Tallas/sizes: Única/ One size



8460105



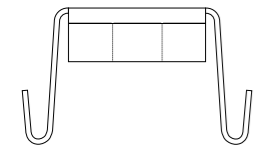
8464105

**8464**

Delantal corto monedero con bolsillos divisorios. Money purse apron.

105 - Negro/Black  
100% Pol./Poly

Largo/Lenght: 24 cm  
Ancho/Width: 59 cm  
Tallas/sizes: Única/ One size



8463701



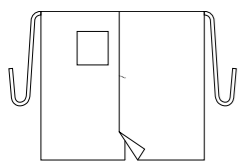
8463900

**8463**

Delantal francés con bolsillo. Long apron with pocket and front vent.

701 - Negro/Black  
900 - Blanco/White  
67% Pol./Poly  
33% Alg./Cotton

Largo/Lenght: 91 cm  
Ancho/Width: 100 cm  
Tallas/sizes: Única/ One size



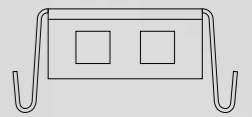
8429782

**8429**

Delantal corto rayado. Short apron with stripes.

782 - Rayas/Stripes  
76 % Alg./Cotton  
24 % Pol./Poly

Largo/Lenght: 39 cm  
Ancho/Width: 83 cm  
Tallas/sizes: Única/ One size



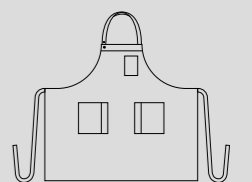
8428782

**8428**

Delantal peto rayado. Adjustable bib apron with stripes.

782 - Rayas/Stripes  
76 % Alg./Cotton  
24 % Pol./Poly

Largo/Lenght: 86 cm  
Ancho/Width: 94 cm  
Tallas/sizes: Única/ One size



**8415**

Delantal corto rayas. Short apron with stripes.

102 - Rayas/Stripes  
100 % Pol./Poly

Largo/Lenght: 63 cm  
Ancho/Width: 104 cm  
Tallas/sizes: Única/ One size



8415102

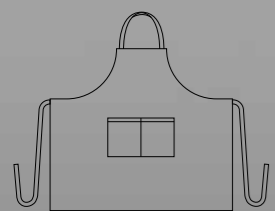
8424102

**8424**

Delantal peto rayado. Adjustable bib apron with stripes.

102 - Rayas/Stripes  
100 % Pol./Poly

Largo/Lenght: 88 cm  
Ancho/Width: 99 cm  
Tallas/sizes: Única/ One size



8435837



8433837

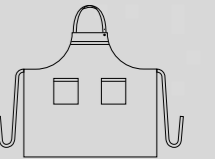
8434837

**8433**

Delantal ajustable con peto de rayas. Adjustable bib apron.

837 - Rayas gris/Gray stripes  
55% Pol./Poly  
45% Alg./Cotton

Largo/Lenght: 92 cm  
Ancho/Width: 99 cm  
Tallas/sizes: Única/ One size

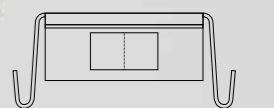


**8434**

Delantal corto de rayas. Short apron.

837 - Rayas gris/Gray stripes  
55% Pol./Poly  
45% Alg./Cotton

Largo/Lenght: 41 cm  
Ancho/Width: 96 cm  
Tallas/sizes: Única/ One size

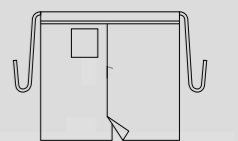


**8435**

Delantal francés de rayas. Long apron with pocket and front vent.

837 - Rayas gris/Gray stripes  
55% Pol./Poly  
45% Alg./Cotton

Largo/Lenght: 93 cm  
Ancho/Width: 99 cm  
Tallas/sizes: Única/ One size



**8466**

Gorro cocinero con velcro posterior. Chef's hat with velcro fastening.

701 - Negro/Black  
741 - Pata de gallo/  
Houndstooth check  
635 - Cuadro negro/Black  
685 - Cuadro vichy azul/  
check blue  
67 % Pol./Poly  
33 % Alg./Cotton

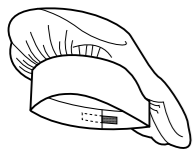
742 - Blanco/White  
100 % Alg./Cotton



844 - Gris/Gray  
70% Alg./Cotton  
30% Pol./Poly

837 - Raya diplomática/  
Diplomatic stripe  
55% Pol./Poly  
45% Alg./Cotton

Talla/size: Única/ One size



8466742



8466635



8466741



8466837



8466685



8466844



8466701



8490701



8490900



8490837



8490635



8490844



8411701



8411900

**8490**

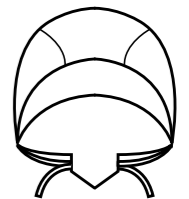
Gorro pirata con cintas atrás. Adjustable bandana hat.

844 - Gris/Gray  
70 % Alg./Cotton  
30 % Pol./Poly

635 - Rayas/Stripes  
701 - Negro/Black  
900 - Blanco/White  
67 % Pol./Poly  
33 % Alg./Cotton

837 - Raya diplomática/  
Diplomatic stripe  
55 % Pol./Poly  
45 % Alg./Cotton

Talla/size: Única/ One size

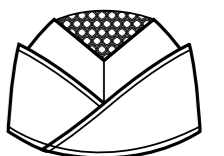


**8411**

Gorro panadero con rejilla en la parte superior. Baker hat with mesh.

900 - Blanco/White  
701 - Negro/Black  
67 % Pol./Poly  
33 % Alg./Cotton

Talla/size: Única/ One size



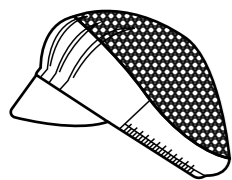
**8408**

Gorro visera con rejilla en la parte superior. Peaked cap with mesh.

700 - Blanco/White  
701 - Negro/Black  
67 % Pol./Poly  
33 % Alg./Cotton

844 - Gris/Gray  
70 % Alg./Cotton  
30 % Pol./Poly

Tallas/sizes: Única/ One size



8408700



8404701



8404775

**8404**

Boina inglesa con goma elástica. Beret english.

701 - Negro/Black  
67% Pol./Poly  
33% Alg./Cotton

775 - Tejano/Denim  
67 % Pol./Poly  
32% Alg./Cotton  
3% Elastan/Elast.

Tallas/sizes: Única/ One size



8408701



8408844



8486102



8486103



8486100



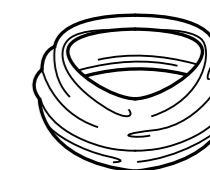
8486101

**8486**

Bandana para la cabeza. Headband.

100 - Frutas / Fruit  
101 - Pescado / Fish  
102 - Blanco / White  
103 - Negro / Black  
100% Pol./Poly.

Tallas/Size: Única/One size



**8535**

Camisa sra. estilo ibicenca.  
Women's Ibicencan style  
shirt.

823 - Blanco/White  
841 - Negro/Black  
70 % Alg./Cotton  
30 % Pol./Poly

Largo/Lenght: 70 cm  
Tallas/sizes: SP-XG / XS-XXXL



8535841



8534841



8534823



8535823



**8534**

Camisa cbro. estilo ibicenca  
Men's Ibicencan style  
shirt.

823 - Blanco/White  
841 - Negro/Black  
70 % Alg./Cotton  
30 % Pol./Poly

Largo/Lenght: 77 cm  
Tallas/sizes: SP-XG / XS-XXXL



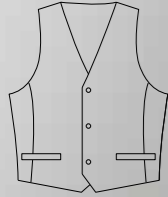
**8576**

Chaleco de caballero.  
Men's waistcoat.

8576501

501 - Gris/Gray  
65% Pol/Poly  
35% Algodon/Cotton

Largo/Lenght: 54 cm  
Tallas/sizes: SP-XG / XS-XXXL

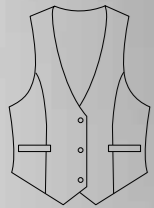


**8575**

Chaleco de señora.  
Women's waistcoat.

501 - Gris/Gray  
65% Pol/Poly  
35% Algodon/Cotton

Largo/Lenght: 46 cm  
Tallas/sizes: SP-XG / XS-XXXL



8571841



8572841

**8571**

Camisa caballero cuello mao.  
Men's shirt with mao collar.

841 - Negro/Black  
70% Algodon/Cotton  
30% Pol/Poly

Largo/Lenght: 76 cm  
Tallas/sizes: SP-XG / XS-XXXL



**8572**

Camisa señora cuello mao.  
Women's shirt with mao collar.

841 - Negro/Black  
70 % Alg./Cotton  
30 % Pol./Poly

Largo/Lenght: 65 cm  
Tallas/sizes: SP-XG / XS-XXXL



**8061**

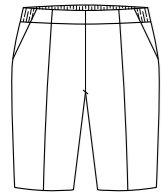
Bermuda señora con cintura plana. Bermuda shorts for women with front flat waist.

**700 - Blanco/White**  
67 % Pol./Poly  
33 % Alg./Cotton

**725 - Negro/Black**  
100 % Pol./Poly

**775 - Tejano/Denim**  
65% Pol./Poly  
32% Alg./Cotton  
3% Elastano/Elast.

Largo/length: 52 cm  
Talla/size: SP-XG / XS-XXXL



8061775



8061725



8061700

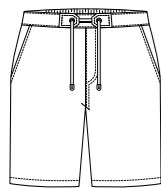
**8543**

Bermuda caballero con cintura elástica atrás. Cropped pants with elastic back waist.

**701 - Negro/Black**  
**700 - Blanco/White**  
67 % Pol./Poly  
33 % Alg./Cotton

**775 - Tejano/Denim**  
65% Pol./Poly  
32% Alg./Cotton  
3 % Elastano/Elastan

Largo/length: 53 cm  
Talla/size: SP-XG / XS-XXXL



8543775



8543701



8543700

Ver más pantalones en  
página 48-51 mujer  
y 132-133 hombre



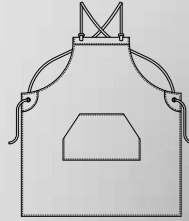
**8493**

Delantal tejano con peto y detalle piel. Bib denim apron with skin.

775 - Tejano/Denim  
65 % Pol/Poly  
32% Algodon/Cotton  
3% Elastano/Elast.

Largo/Lenght: 84 cm  
Ancho/Width: 77 cm  
Tallas/sizes: Única/ One size

8493775



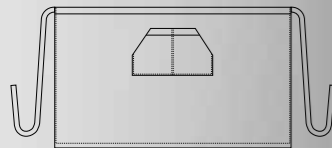
**8494**

Delantal tejano corto y detalle piel. Short denim apron with skin.

775 - Tejano/Denim  
65 % Pol/Poly  
32% Algodon/Cotton  
3% Elastano/Elast.

Largo/Lenght: 63 cm  
Ancho/Width: 100 cm  
Tallas/sizes: Única/ One size

8494775



8494775

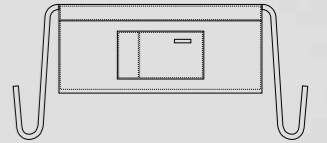
DYNEKE

**8478**

Delantal tejano corto. Short denim apron.

775 - Tejano/Denim  
65 % Pol/Poly  
32% Algodon/Cotton  
3% Elastano/Elast.

Largo/Lenght: 39 cm  
Ancho/Width: 87 cm  
Tallas/sizes: Única/ One size



8479775

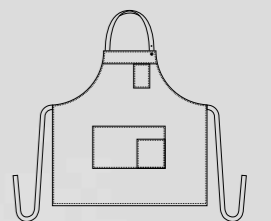
8478775

**8479**

Delantal tejano con peto. Bib denim apron.

775 - Tejano/Denim  
65 % Pol/Poly  
32% Algodon/Cotton  
3% Elastano/Elast.

Largo/Lenght: 77 cm  
Ancho/Width: 78 cm  
Tallas/sizes: Única/ One size





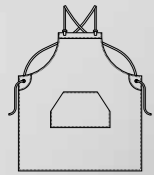
**8421**

Delantal tejano con peto.  
Bib denim apron.

775 - Tejano/Denim  
65 % Pol/Poly  
32% Algodon/Cotton  
3% Elastano/Elast.

Largo/Lenght: 78 cm  
Ancho/Width: 76 cm  
Tallas/sizes: Única/ One size

8421775



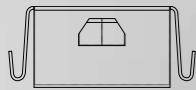
8420775

**8420**

Delantal tejano corto.  
Short denim apron.

775 - Tejano/Denim  
65 % Pol/Poly  
32% Algodon/Cotton  
3% Elastano/Elast.

Largo/Lenght: 41 cm  
Ancho/Width: 84 cm  
Tallas/sizes: Única/ One size



DYNEKE



8492775



8425775

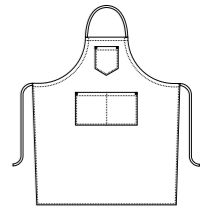


**8492**

Delantal tejano con peto.  
Bib denim apron.

775 - Tejano/Denim  
65 % Pol/Poly  
32% Algodon/Cotton  
3% Elastano/Elast.

Largo/Lenght: 87 cm  
Ancho/Width: 78 cm  
Tallas/sizes: Única/ One size

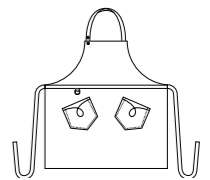


**8425**

Delantal ajustable tejano  
con peto. Bib denim apron.

775 - Tejano/Denim  
65 % Pol/Poly  
32% Algodon/Cotton  
3% Elastano/Elast.

Largo/Lenght: 80 cm  
Ancho/Width: 76 cm  
Tallas/sizes: Única/ One size



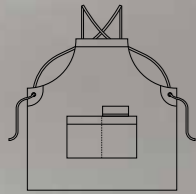
**8412**

Delantal con peto cruzado atrás. Bib denim apron crossed at the back.

505 - Verde/Green  
506 - Marrón/Brown  
39 % Pol./Poly  
30 % Alg./Cotton  
31 % Acril./Acrylic

310 - Piedra/Stone  
70 % Alg./Cotton  
30 % Pol./Poly

Largo/Lenght: 77 cm  
Ancho/Width: 75 cm  
Tallas/sizes: Única/ One size



8413310

8412310



8412506



8413506



8412505



8413505

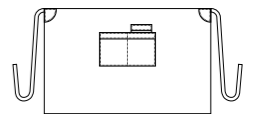
**8413**

Delantal envolvente. Denim apron.

505 - Verde/Green  
506 - Marrón/Brown  
39 % Pol./Poly  
30 % Alg./Cotton  
31 % Acril./Acrylic

310 - Piedra/Stone  
70 % Alg./Cotton  
30 % Pol./Poly

Largo/Lenght: 65 cm  
Ancho/Width: 104 cm  
Tallas/sizes: Única/ One size

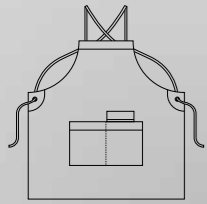


**8419**

Delantal con peto cruzado atrás. Bib denim apron crossed at the back.

501 - Gris/Gray  
65 % Pol./Poly  
35 % Alg./Cotton

Largo/Length: 77 cm  
Ancho/Width: 75 cm  
Tallas/sizes: Única/ One size



8419501



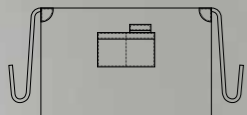
8418501

**8418**

Delantal envolvente. Denim apron.

501 - Gris/Gray  
65 % Pol./Poly  
35 % Alg./Cotton

Largo/Length: 65 cm  
Ancho/Width: 104 cm  
Tallas/sizes: Única/ One size



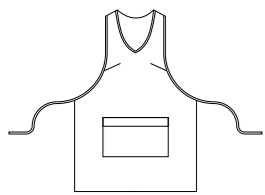
**8026**

Estola servicios con cintas ajustables. Service stole adjustable with cloth straps.

680 -Gris/Gray  
611 -Celeste/Light Blue  
70 % Pol./Poly  
30 % Alg./Cotton

724 -Marino/Navy  
100 % Pol./Polyester

Largo/Lenght: 81 cm  
Tallas/sizes: Única/ One size



8026680



8026724

**8032**

Chaqueta de limpieza básica manga corta. Service basic jacket s/sleeve.

613-Azul/Blue  
70 % Pol./Poly  
30 % Alg./Cotton

Largo/Lenght: 73 cm  
Talla/size: SP-XG / XS-XXXL



8032604



8026611



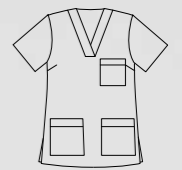
8235610

**8235**

Blusón de servicio con cuello pico manga corta. V-neck service tunic s/sleeve.

610 - Rosa/Pink  
611 - Celeste/Light Blue  
680 - Gris/Gray  
613 - Azul/Blue  
67 % Pol./Poly  
33 % Alg./Cotton

Largo/lenght: 70 cm  
Talla/size: SP-XG / XS-XXXL



8235611



8235680



8235613

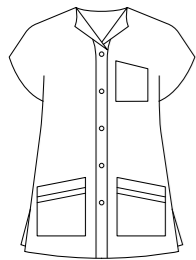
**8030**

Chaqueta de servicio manga ranglan. Service tunic with short raglan sleeve.

**740 -Azul/Blue**  
70 % Pol./Poly  
30 % Alg./Cotton

**636 -Negro/Black**  
70 % Pol./Poly  
30 % Alg./Cotton

**Largo/Lenght:** 73 cm  
**Tallas/sizes:** SP-XG / XS-XXXL



8030740



8030636



8054798



8054900

**8054**

Chaqueta de servicios manga ranglan corta. Service tunic with raglan sleeve s/s.

**798 -Azul/Blue**  
**900 -Blanco/White**  
67 % Pol./Poly  
33 % Alg./Cotton

**Largo/lenght:** 73 cm  
**Talla/size:** SP-XG / XS-XXXL



**8135**

Chaqueta de servicio manga corta. Service jacket s/s.

**613 -Azul/Blue**  
**614 -Burdeos/Maroon**  
70 % Pol./Poly  
30 % Alg./Cotton

**Largo/Lenght:** 73 cm  
**Tallas/sizes:** SP-XG / XS-XXXL



8135613



8135614



8037613



8037614

**8037**

Chaqueta de limpieza con cuello solapa. Service jacket with lapel collar.

**613 -Azul/Blue**  
**614 -Rojo/Red**  
70 % Pol./Poly  
30 % Alg./Cotton

**Largo/Lenght:** 73 cm  
**Tallas/sizes:** SP-XG / XS-XXXL

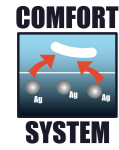


## Tecnología de nuestros tejidos y sus propiedades.

Dyneke apuesta por la innovación tanto en sus diseños como en los materiales que se incorporan en nuestras prendas, de esta forma obtenemos unos resultados garantizables en cuanto a comodidad y resistencia.

## Technology of our tissues and their properties

Dyneke is committed to innovation both in its designs and in the materials that are incorporated in our garments, in this way we obtain a guaranteed results in terms of comfort and resistance.



**IONES DE PLATA.** La fibra especializada para los grandes profesionales. La propiedad de la fibra con IONES DE PLATA inhibe el crecimiento y desarrollo de bacterias. La aportación de la fibra EOL (XLA) a nuestro tejido proporciona el confort de la elasticidad y la resistencia en su uso.

- Tacto suave y natural
- Piel seca
- 100% poliéster
- Antibacteriano permanente
- Expulsión de la humedad
- 180 gr/m<sup>2</sup>

**IONES OF SILVER** The specialized fiber for the great professionals. The property of the fiber with SILVER IONS inhibits the growth and development of bacteria. The contribution of EOL (XLA) fiber to our fabric provides the comfort of elasticity and resistance in its use.

- Soft and natural touch
- Expulsion of moisture
- Dry Skin
- Permanent antibacterial
- 100% polyester
- 180 gr / m<sup>2</sup>



**RICO EN ALGODÓN.** Sofisticación y sobriedad. Tejido muy agradable debido a su riqueza en algodón (70%) y extremadamente confortable gracias a la aportación de otras fibras: poliéster, elastano, ....

- Fácil planchado
- Aspecto suave
- Solidez
- Sencillo y Elegante
- 130 gr./m<sup>2</sup>

**RICH IN COTTON** Sophistication and sobriety. Very nice fabric because of its richness in cotton (70%) and extremely comfortable thanks to the contribution of other fibers: polyester, elastan

- Easy ironing
- Soft appearance
- Solidity
- Simple and Elegant
- 130 gr./m<sup>2</sup>



**ALGODÓN 100%.** La dulzura del algodón en nuestras prendas. Aporta a la prenda la delicadeza que la caracteriza.

- Higiénico
- Suavidad al contacto con la piel
- Material natural
- Absorbente de la humedad

**COTTON 100%.** The sweetness of cotton in our garments. Natural material 100%. It gives the garment the delicacy that characterizes it.

- Hygienic
- Softness on contact with skin
- Natural material
- Moisture absorbent



**DRY SYSTEM.** El máximo confort y la elegancia de nuestras prendas. Acabado especial de tela de alto confort gracias al acabado hidrofílico. Multifilamento texturado.

- Piel seca
- Reblandecimiento
- Antiestático
- Durabilidad
- 100% poliéster
- 125 gr/m<sup>2</sup>

**DRY SYSTEM** The maximum comfort and elegance of our garments. Special finishing of fabric of high comfort thanks to the hydrophilic finish. Textured multifilament.

- Dry Skin
- Softening
- Anti-Static
- Durability
- 100% polyester
- 125 gr/m<sup>2</sup>

**SHOFT** Nuestras sargas; mejorando cada día. Ligero y solidez en los colores

- Color 700, 701, 900
- Higiénico: admite su limpieza con temperaturas hasta 60°
- No produce pilling
- 67% poliéster, 33% algodón
- 195 gr./m<sup>2</sup>

**SHOFT** Our twill; improving every day. Material "SHOFT". Light weight and color fastness

- Colour 700, 701, 900
- Hygienic: supports cleaning with temperatures up to 60°
- Does not produce pilling
- 67% polyester, 33% cotton
- 195 gr./m<sup>2</sup>

**DENIM** Un icono en nuestros delantales. De trama blanca y urdimbre teñida de azul.

- 65% poliéster, 32% algodón, 3% spandex
- 230 gr./m<sup>2</sup>
- Súper elástico

**DENIM** An icon on our aprons. Of white weft and warp stained blue.

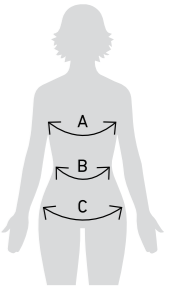
- Super elastic
- 65% polyester, 32% cotton, 3% spandex
- 230 gr./m<sup>2</sup>

## Guía de tallaje mujer Women measurement guide

- A Perímetro pecho / Chest contour
- B Perímetro cintura / Waist contour
- C Perímetro cadera / Hip contour

### Casacas, Pichis y Prendas Unisex / Tunics Jumper dress and unisex clothing

	SP		P		M		G		SG		SSG		XG	
	36	38	40	42	44	46	48	50	52	54	56	58	60	62
Pecho Chest	80	84	88	92	96	100	104	108	112	116	120	124	128	132
Cadera Hip	88	92	96	100	104	108	112	116	120	124	128	132	136	140



### Pantalones Mujer y Pantalones Unisex / Woman trousers and unisex trousers

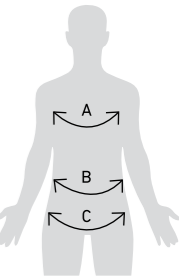
	SP		P		M		G		SG		SSG		XG	
	36	38	40	42	44	46	48	50	52	54	56	58	60	62
Cintura Waist	64	68	72	76	80	84	88	92	96	100	104	108	112	116
Cadera Hip	90	94	98	102	106	110	114	118	122	126	130	134	138	142

## Guía de tallaje hombre Men measurement guide

- A Perímetro pecho / Chest contour
- B Perímetro cintura / Waist contour
- C Perímetro cadera / Hip contour

### Casacas / Tunics

	SP		P		M		G		SG		SSG		XG	
	42-44		46-48		50-52		54-56		58-60		62-64		66-68	
Pecho Chest	84-90		92-98		100-106		108-114		116-122		124-130		132-138	
Cadera Hip	82-88		90-96		98-104		106-112		114-120		122-128		130-136	



### Pantalones Hombre / Man trousers

	SP		P		M		G		SG		SSG		XG	
	36	38	40	42	44	46	48	50	52	54	56	58	60	62
Cintura Waist	70	74	78	82	86	90	94	98	102	106	110	114	118	122
Cadera Hip	82	86	90	94	98	102	106	110	114	118	122	126	130	134



**CONFECCIONES DYNEKE**  
Herois del Bruc, 9 - 08784 Piera (Barcelona)  
Tel: 93778 90 83

**DYNEKE.COM**