

**MICROFIBRA ANTIBACTERIANA**  
ANTIBACTERIAL MICROFIBER

Este tejido posee alta resistencia a las salpicaduras de lejía diluida. Contiene propiedades antibacterianas y antifúngicas. Reduce el olor corporal. Es un tejido muy transpirable. Su acabado hidrofugado repele los líquidos. Permite lavado industrial y es de secado rápido. Además no necesita plancha.

This fabric has a high resistance to diluted bleach splashes. Moreover, it has antibacterial and antifungal properties. It reduces body odor and it is a very breathable fabric. In addition, it has a water-repellent finish. It allows industrial washing and it is quick drying. It does not need to be ironed.



**1170**

XS-2XL

Guía de tallas  
Size guide **S3**



Casaca mujer manga corta  
Women's short sleeve tunic

Escote cruzado cerrado con  
automáticos ocultos  
Crossover neck with hidden  
press buttons

**1719**

XS-2XL

Guía de tallas  
Size guide **S3**



Pantalón pijama mujer  
Women's scrub trousers

Cintura con goma elástica  
y cordón  
Elastic waist and drawstring

Bolsillos en costados  
Side pockets



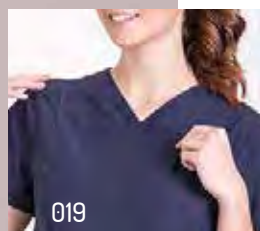
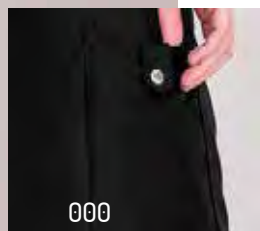
100% Poliéster  
150 gr/m<sup>2</sup>  
100% Polyester

REGULAR FIT

REGULAR FIT



Colorido 1170 y 1719  
Colors 1170 & 1719



137

**1172**

XS-2XL

Guía de tallas  
Size guide S3



Casaca mujer manga  
corta bicolor  
Women's short sleeve  
bicolor tunic

Escote cruzado cerrado con  
automáticos ocultos  
Crossover neck with hidden  
press buttons

REGULAR FIT



100% Poliéster  
150 gr/m<sup>2</sup>  
100% Polyester



# norvil

## MICROFIBRA STRETCH STRETCH MICROFIBER

Nuestra microfibra stretch es un tejido ligero, cómodo y muy elástico.  
De fácil mantenimiento.

Our stretch microfiber is a light, comfortable and highly elastic fabric.  
It can be easily maintained.



# 1121

XS-2XL

Guía de tallas  
Size guide **S3**



Casaca mujer manga corta bicolor  
Women's bicolor short sleeve tunic

Cierre frontal con cremallera  
Zip frontal clousure

158

REGULAR FIT



86% Poliéster - 14% Elastano  
118 gr/m<sup>2</sup>  
86% Polyester - 14% Elastane

Mod. 95  
P. 143

138

159

319

1171

XS-2XL

Guía de tallas  
Size guide S1



Casaca hombre bicolor  
Men's bicolor tunic

Cierre con automáticos  
Closure with push buttons

Bolsillos en el costado  
Side pockets

Mod. 1715  
P. 159

158

159

139

REGULAR FIT



86% Poliéster - 14% Elastano  
118 gr/m<sup>2</sup>  
86% Polyester - 14% Elastane

**norvil**

# MICROFIBRA STRETCH

STRETCH MICROFIBER

# 1142

0-12

Guía de tallas  
Size guide S5



140

Casaca mujer cuello mao  
y manga corta  
Women's mandarin collar and  
short sleeve tunic

Cierre frontal con automáticos  
recubiertos con un lazo  
Front closure with push buttons  
covered with a bow

Dos bolsillos  
Two pockets

Fuelle en la espalda  
Back yoke

REGULAR FIT



86% Poliéster - 14% Elastano  
118 gr/m<sup>2</sup>  
86% Polyester - 14% Elastane

\* las opciones de color  
hacen referencia a  
los lazos  
colour options refer to  
the ribbon

Mod. 95  
P. 143



000



023



080

# 1192

XS-2XL

Guía de tallas  
Size guide S1

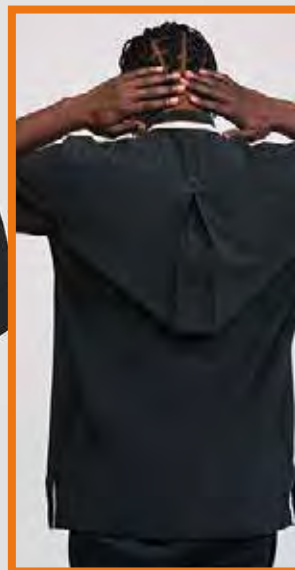


Casaca hombre cuello  
mao y manga corta  
Men's mandarin collar  
and short sleeve tunic

141

Cinta jacquard en el cuello  
Jacquard ribbon in the collar

Dos bolsillos  
Two pockets



REGULAR FIT



86% Poliéster - 14% Elastano  
118 gr/m<sup>2</sup>  
86% Polyester - 14% Elastane

Mod. 83  
P. 152

**norvil**

# MICROFIBRA STRETCH

STRETCH MICROFIBER

# 1100

XS-2XL

Guía de tallas  
Size guide **S3**



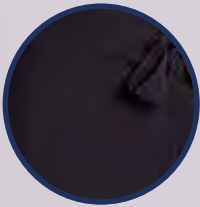
Kimono mujer manga corta  
Women's short sleeve kimono

Escote pico cruzado y solapas  
V-neck and lapels

Cierre frontal con lazada  
Frontal clousure with bow



142



000



005

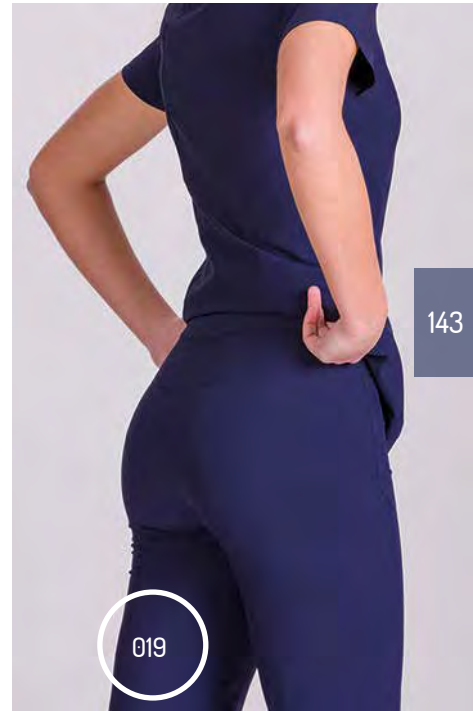
REGULAR FIT



019

86% Poliéster - 14% Elastano  
118 gr/m<sup>2</sup>  
86% Polyester - 14% Elastane





**95**

XS-2XL

Guía de tallas  
Size guide S3



Pantalón mujer cierre con  
automático y cremallera  
Women's trousers with push  
button and zip closure

Cintura posterior con  
goma elástica  
Back elastic waist

Dos bolsillos frontales  
Two front pockets

REGULAR FIT



86% Poliéster - 14% Elastano  
118 gr/m<sup>2</sup>  
86% Polyester - 14% Elastane

# SARGA + CANALÉ TWILL + RIB-KNIT FABRIC

Toda la resistencia y durabilidad de nuestra sarga unida a la comodidad que otorga el tejido de canalé.  
It combines the resistance and durability of our twill with the comfort provided by the rib-knit fabric.



144



Mod. 1719  
P. 136

## 1176

XS-2XL

Guía de tallas  
Size guide S3



Casaca mujer  
Women's tunic

Mod. 90  
P. 149

Pespunte contrastado  
Contrast stitching

Cuello, mangas y centro  
espalda en canalé  
Collar, sleeves and center  
back in rib-knit

REGULAR FIT



72% Poliéster - 26% Algodón  
2% Elastano  
195gr/m<sup>2</sup>

72% Polyester - 26% Cotton - 2% Elastane

# 1168

XS-2XL

Guía de tallas  
Size guide S1



Casaca hombre  
Men's tunic

Pespunte contrastado  
Contrast stitching

Cuello y centro  
espalda en canalé  
Collar and center back  
in rib-knit

REGULAR FIT



72% Poliéster - 26% Algodón  
2% Elastano  
195gr/m<sup>2</sup>

72% Polyester - 26% Cotton - 2% Elastane

145



181



190

Mod. 90  
P.149



**norvil**

# SARGA + CANALÉ

TWILL + RIB-KNIT FABRIC

## 1177

XS-2XL

Guía de tallas  
Size guide S3



REGULAR FIT



001

72% Poliéster - 26% Algodón  
2% Elastano  
195 gr/m<sup>2</sup>

72% Polyester - 26% Cotton - 2% Elastane

Casaca mujer manga corta  
Women's short sleeve tunic

Cuello oriental  
Mandarin collar

Mangas y espalda en canalé  
Back and sleeves in rib-knit



000

# 1178

XS-2XL

Guía de tallas  
Size guide S3



REGULAR FIT



72% Poliéster - 26% Algodón  
2% Elastano  
195 gr/m<sup>2</sup>

72% Polyester - 26% Cotton - 2% Elastane

Casaca mujer manga larga  
Women's long sleeve tunic

Cuello oriental  
Mandarin collar

Mangas y espalda en canalé  
Back and sleeves in rib-knit



**norvil**

# SARGA / COLORES INDANTHREN®

TWILL / INDANTHRENE® COLORS

La resistencia de nuestra sarga policotón de 195 gr. unida a la solidez de los colores Indanthren® hacen que estas prendas tengan una vida útil muy duradera.

The resistance of our 195 gr. polycotton twill combined with the strength of the Indanthrene® colors gives these garments a very long life.

148

COLORES INDANTHREN®  
INDANTHRENE® COLORS



IN153



IN284



IN286

285

67% Poliéster  
33% Algodón  
195 gr/m<sup>2</sup>  
67% Polyester - 33% Cotton



# 1184

XS-2XL

Guía de tallas  
Size guide S7



REGULAR FIT



**90**

XS-2XL

Guía de tallas  
Size guide **S8**

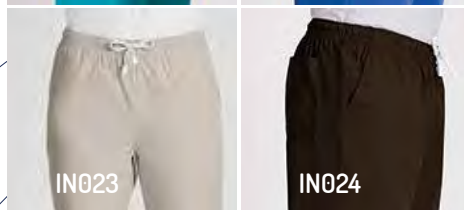
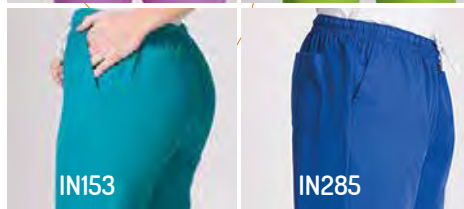
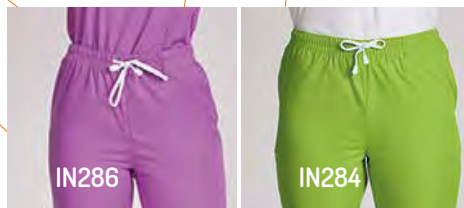


Pantalón pijama cordón unisex  
Unisex scrub trousers

Cintura con goma elástica y cordón  
Elastic waist and drawstring

Bolsillos en costados y uno posterior  
Side pockets and one on the back

UNISEX



COLORES INDANTHRE®  
INDANTHRE® COLORS



001

REGULAR FIT



**1194**

XS-2XL

Guía de tallas  
Size guide **S7**



Casacas unisex manga  
corta ranglan  
Unisex short raglan sleeve  
tunics

Escote pico y tres bolsillos  
de parche  
V-neck and three patch pockets

Aberturas laterales  
Side vents

67% Poliéster  
33% Algodón  
195 gr/m²  
67% Polyester - 33% Cotton



001

**norvil**

# PIQUÉ+ SARGA

## PIQUE+TWILL

Tejido clásico en piqué canutillo.  
A classic fabric characterized by fine ribbing.

# 1150

0-12

Guía de tallas  
Size guide S5



60% Poliéster - 40% Algodón  
185 gr/m<sup>2</sup>  
60% Polyester - 40% Cotton

150

Casaca mujer bicolor  
manga corta  
Women's short sleeve  
bicolor tunic

Cierre de cremallera  
Zip closure

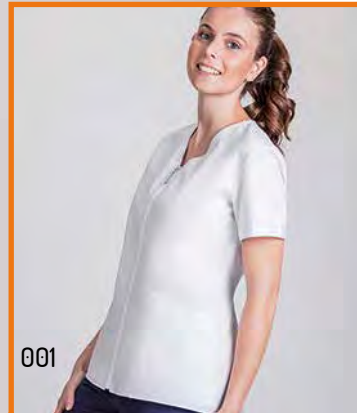
Dos bolsillos  
Two pockets

218

REGULAR FIT

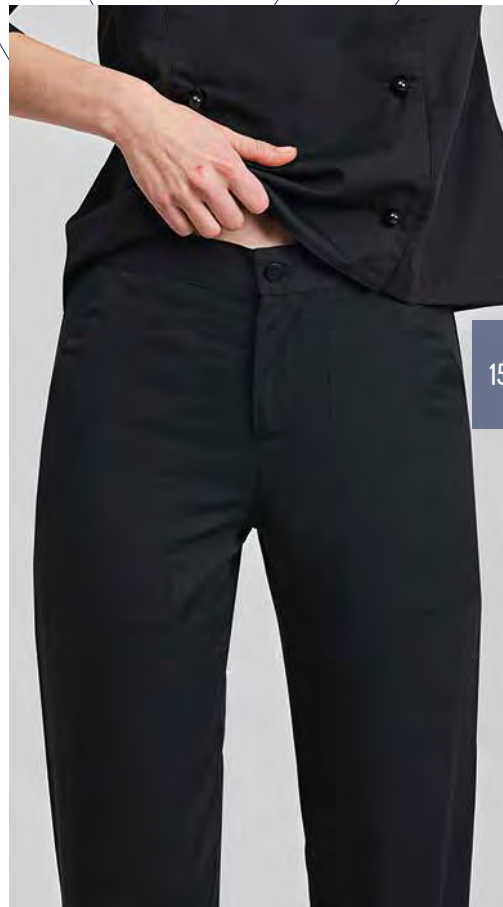


Mod. 83  
Página  
siguiente  
Next page





# SARGA TWILL

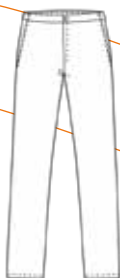


151

188

000

REGULAR FIT



## 83

XS-2XL

Guía de tallas  
Size guide **S8**



Pantalones pijama unisex  
Unisex scrub trousers

Bolsillos en costados y uno posterior  
Side pockets and one on the back

Cintura con goma posterior,  
cierre botón y cremallera  
Back elastic waist, button and zip

67% Poliéster - 33% Algodón  
195 gr/m<sup>2</sup>  
67% Polyester - 33% Cotton

**norvil**

## SARGA TWILL

Resultados garantizados con este tejido de gran resistencia y color sólido.

Guaranteed results with this durable and solid colour fabric.

# 1197

XS-2XL

Guía de tallas  
Size guide S1



152

Casaca hombre manga corta  
Men's short sleeve tunic

Cuello oriental  
Mandarin collar

Fuelle en la espalda  
Back yoke

REGULAR FIT



67% Poliéster - 33% Algodón  
195 gr/m<sup>2</sup>

67% Polyester - 33% Cotton

1107

0-12

Guía de tallas  
Size guide S5



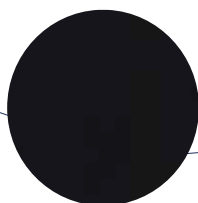
Casaca mujer manga corta  
Women's short sleeve tunic

Cuello oriental y cierre  
cruzado  
Mandarin collar and  
asymmetrical closure

Fuelle en la espalda  
Back yoke



153



000

67% Poliéster - 33% Algodón  
195 gr/m<sup>2</sup>

67% Polyester - 33% Cotton

REGULAR FIT



**norvil**

## SARGA TWILL

Clásicos renovados en nuestro tejido más versátil.

Renewed classics in our most versatile fabric.

# 1055

0-12

Guía de tallas  
Size guide **S5**



154

Vestido de mujer manga corta  
Women's short sleeve dress

Puntilla en cuello y mangas  
Collar and sleeves with picot-edge

REGULAR FIT



Mod. 642  
P. 211



000

67% Poliéster - 33% Algodón  
195 gr/m<sup>2</sup>

67% Polyester - 33% Cotton



216

224

234



Mod. 90  
P. 149

**1123**

0-12

Guía de tallas  
Size guide S5

Casaca mujer manga corta raglan  
Women's short raglan sleeve tunic

Contraste en rayas  
Contrast-striped

Dos bolsillos  
Two pockets

67% Poliéster - 33% Algodón  
195 gr/m<sup>2</sup>

67% Polyester - 33% Cotton

REGULAR FIT



155

**norvil**

# POPELÍN POPLIN

Impecables y cómodos con nuestro popelín de siempre.  
Stylish and comfortable in our regular poplin.

## 1186

XS-2XL

Guía de tallas  
Size guide **S7**



Casaca unisex manga corta  
Unisex short sleeve tunic

Cuello solapa y canesú  
Flap collar and yoke

Aberturas laterales  
Side vents



67% Poliéster -33% Algodón  
104 gr/m<sup>2</sup>  
67% Polyester - 33% Cotton



## 86

XS-2XL

Guía de tallas  
Size guide **S8**



Pantalón pijama cordón unisex  
Unisex scrub trousers

Cintura con goma elástica y cordón  
Elastic waist and drawstring

Bolsillos en costados y uno posterior  
Side pockets and one on the back

REGULAR FIT



REGULAR FIT



156



# SEERSUCKER

Tejido rico en algodón con acabado seersucker que le otorga un peculiar aspecto.

Gracias a su geometría, permite que la piel respire mejor, resultando así una **prenda muy fresca.**

Además casi no necesita plancha.

Cotton-rich fabric with a seersucker finish that gives it a peculiar look.

Its wrinkled effect allows the skin to breathe better. It is a very lightweight and soft fabric.



# 1127

0-12

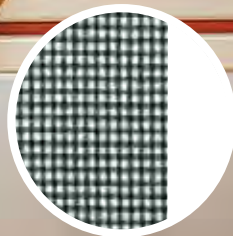
Guía de tallas  
Size guide **S5**



Casaca mujer manga corta  
Women's short sleeve tunic

Cierre con botones  
Front fastening with buttons

157



000

REGULAR FIT



Mod. 83  
P.151

65% Algodón - 35% Poliéster  
130 gr/m<sup>2</sup>  
65% Cotton - 35% Polyester

**LÍNEA NATURA® NATURA®**

Nuestra línea en tejido Natura® tiene todas las ventajas del algodón y ninguno de sus inconvenientes. Es un piqué fresco y transpirable. El interior del tejido está formado por algodón y el exterior por la fibra Natura®. Esta fibra transporta la humedad al exterior donde se dispersa rápidamente por evaporación. Con colores sólidos, las prendas no necesitan planchado ni se deforman durante su vida útil y admiten lavado industrial.

Our Natura® fabric line has all the advantages of cotton and none of its disadvantages. These high-endurance fibers make moisture rapidly evaporate by concentrating it in its outer side. Clothes are color-lasting, do not need to be ironed, they show no deformation along its lifetime and they resist industrial washing.



**1732**

Camiseta unisex manga corta  
Unisex short sleeve T-Shirt

XS-2XL  
Guía de tallas  
Size guide S7

Escote redondo con cuatro  
automáticos  
Round neck with four push buttons

Un bolsillo en el pecho  
Chest pocket



REGULAR FIT



001

**1738**

Camiseta mujer manga corta  
Women's short sleeve T-Shirt

XS-2XL  
Guía de tallas  
Size guide S3

Escote pico y dos bolsillos  
V-neck and two pockets



REGULAR FIT



019





55% Algodón  
45% Natura®  
185 gr/m<sup>2</sup>  
55% Cotton - 45% Natura®



UNISEX

**1715**

XS-2XL

Guía de tallas  
Size guide S8



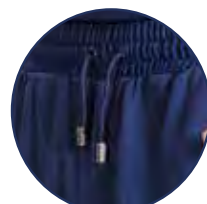
Pantalón pijama cordón unisex

Unisex elastic waistband and drawstring

Bolsillos en costados y uno en la pernera  
Side pockets and one on the leg

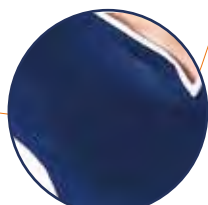


001



019

REGULAR FIT



019

REGULAR FIT



159



**1728**

XS-2XL

Guía de tallas  
Size guide S3



Casaca mujer bicolor manga corta  
Women's bicolor short sleeve tunic

Escote lágrima  
Tear neckline

Dobles bolsillos  
Double pockets

**norvil**  protect

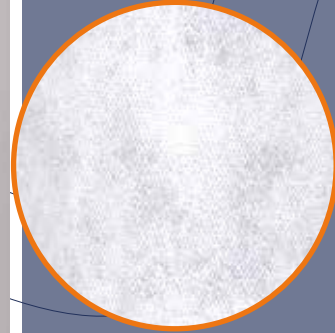
Norvil Protect es nuestra línea de productos pensados para protegerte y que protejas a los demás.

Los productos higiénicos están fabricados con tejidos desechables y también reutilizables.

Norvil Protect is our line of products designed to protect you and to protect others.

Hygienic products are made of disposable and also reusable fabrics.





001

213

## BATMOI

Bata higiénica desechable  
Disposable hygienic gown

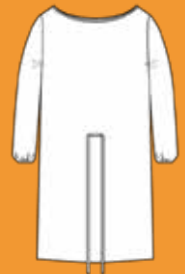
Talla única  
One size

Manga larga ajustada con goma  
Long sleeve with elastic wrist



Cierre posterior con tiras de  
atar en cuello y cintura  
Back closure with ribbons to adjust  
neck and waist

REGULAR FIT



TST  
100% Polipropileno  
40 gr/m<sup>2</sup>  
100% Polypropylene TST

# BATM04

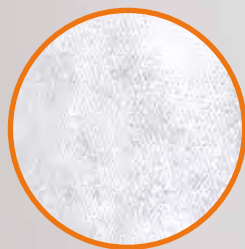
Talla única  
One size



Bata higiénica desechable  
Disposable hygienic gown

Manga larga  
Long sleeve

Cierre frontal con velcro  
Front velcro closure



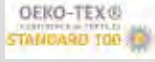
001



REGULAR FIT



TST  
100% Polipropileno  
40 gr/m<sup>2</sup>  
100% Polypropylene TST



\* 25 ciclos de lavado a 60° sin perder sus propiedades.

\* Fabric supports up to 25 washing cycles at 60° without losing its properties.

Tejido testado según UNE-EN4683, UNE0065:2020 y CEE/93/42. Homologado por AITEX.

Fabrics are tested according to UNE-EN4683, UNE0065:2020 and CEE/93/42. Approved by AITEX.

REGULAR FIT



Microfibra  
100% Poliéster  
82 gr/m<sup>2</sup>

Microfiber 100% Polyester



# BATMO3

Talla única  
One size



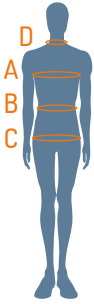
Bata higiénica reutilizable  
Reusable hygienic gown

Manga larga ajustada con goma  
Long sleeve with elastic wrist

Cierre posterior con tiras de atar en cuello y cintura  
Back closure with ribbons to adjust neck and waist



001



HOMBRE MAN



# S1

### MEDIDAS ANATÓMICAS Anatomic measurements

**D** CUELLO cm  
Neck  
**A** PECHO cm  
Chest  
**B** CINTURA cm  
Waist  
**C** CADERA cm  
Hip

|    |    |    |    |    |     |     |     |     |     |     |     |     |     |     |     |     |     |     |
|----|----|----|----|----|-----|-----|-----|-----|-----|-----|-----|-----|-----|-----|-----|-----|-----|-----|
| 34 | 35 | 36 | 37 | 38 | 39  | 40  | 41  | 42  | 43  | 44  | 45  | 46  | 47  | 48  | 49  | 50  | 51  | 52  |
| 76 | 80 | 84 | 88 | 92 | 96  | 100 | 104 | 108 | 112 | 116 | 120 | 124 | 128 | 132 | 136 | 140 | 144 | 148 |
| 60 | 64 | 68 | 72 | 76 | 80  | 84  | 88  | 92  | 96  | 100 | 104 | 108 | 112 | 116 | 120 | 124 | 128 | 132 |
| 80 | 84 | 88 | 92 | 96 | 100 | 104 | 108 | 112 | 116 | 120 | 124 | 128 | 132 | 136 | 140 | 144 | 148 | 152 |

### TALLA NORVIL Norvil size

|    |    |    |    |    |    |    |    |    |    |     |     |     |     |     |     |     |     |     |
|----|----|----|----|----|----|----|----|----|----|-----|-----|-----|-----|-----|-----|-----|-----|-----|
| 1  | 1  | 2  | 2  | 3  | 3  | 4  | 4  | 5  | 5  | 6   | 6   | 7   | 8   | 8   | 9   | 9   | 10  | 10  |
| 35 | 35 | 36 | 37 | 38 | 39 | 40 | 41 | 42 | 43 | 44  | 45  | 46  | 48  | 48  | 50  | 50  | 52  | 52  |
| XS | XS | S  | S  | M  | M  | L  | L  | XL | XL | 2XL | 2XL | 3XL | 4XL | 4XL | 5XL | 5XL | 6XL | 6XL |
| XS | XS | S  | S  | M  | M  | L  | L  | XL | XL | 2XL | 2XL | 3XL | 3XL | 4XL | 4XL | 5XL | 5XL | 6XL |
| 38 | 40 | 42 | 44 | 46 | 48 | 50 | 52 | 54 | 56 | 58  | 60  | 62  | 64  | 66  | 68  | 70  | 72  | 74  |
| 30 | 32 | 34 | 36 | 38 | 40 | 42 | 44 | 46 | 48 | 50  | 52  | 54  | 56  | 58  | 60  | 62  | 64  | 66  |

### TALLAS INTERNACIONALES International sizes

Tallas europeas  
European sizes

UK · IRL 13 3/4 13 3/4 14 1/2 14 1/2 15 1/2 15 1/2 16 16 17 17 17 3/4 17 3/4 18 19 19 19 3/4 19 3/4 20 1/2 20 1/2

Tallas europeas  
European sizes

UK · IRL 28 30 32 34 36 38 38 40 42 44 46 48 48 50 52 54 56 58 58

Italia

42 44 46 48 50 52 54 56 58 60 62 64 66 68 70 72 74 76 78

Holland · Germany  
Switzerland  
Scandinavia

36 38 40 42 44 46 48 50 52 54 56 58 60 62 64 66 68 70 72

France · Portugal

30 32 34 36 38 40 42 44 46 48 50 52 54 56 58 60 62 64 66

UK · IRL

20 22 24 26 28 30 32 34 36 38 40 42 44 46 48 50 52 54 56

Italia

32 36 38 40 42 44 46 48 50 52 54 56 58 60 62 64 66 68 70

222 CAMISERÍA

Shirts

PRENDAS SUPERIORES

Upper garments

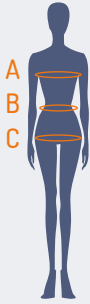
PANTALONES

Trousers

CAMISERÍA  
Shirts

PRENDAS SUPERIORES  
Upper garments

PANTALONES  
Trousers



MUJER WOMAN



S2

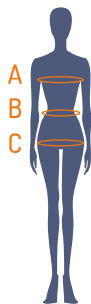
- A** PECHO cm  
Chest
- B** CINTURA cm  
Waist
- C** CADERA cm  
Hip

| MEDIDAS ANATÓMICAS Anatomic measurements |    |    |     |     |     |     |     |     |     |     |     |     |
|--|----|----|-----|-----|-----|-----|-----|-----|-----|-----|-----|-----|
| 82                                       | 86 | 90 | 94  | 98  | 102 | 106 | 110 | 114 | 118 | 122 | 126 | 130 |
| 64                                       | 68 | 72 | 76  | 80  | 85  | 90  | 95  | 100 | 105 | 110 | 115 | 120 |
| 88                                       | 92 | 96 | 100 | 104 | 109 | 114 | 119 | 124 | 129 | 134 | 139 | 144 |
| TALLA NORVIL Norvil size                 |    |    |     |     |     |     |     |     |     |     |     |     |
| 36                                       | 38 | 40 | 42  | 44  | 46  | 48  | 50  | 52  | 54  | 56  | 58  | 60  |

S3

- A** PECHO cm  
Chest
- B** CINTURA cm  
Waist
- C** CADERA cm  
Hip

| MEDIDAS ANATÓMICAS Anatomic measurements        |    |    |     |     |     |     |     |     |     |     |     |     |     |     |    |
|---|----|----|-----|-----|-----|-----|-----|-----|-----|-----|-----|-----|-----|-----|----|
| 82  | 86 | 90 | 94  | 98  | 102 | 106 | 110 | 114 | 118 | 122 | 126 | 130 | 134 | 138 |    |
| 64  | 68 | 72 | 76  | 80  | 84  | 88  | 92  | 96  | 100 | 104 | 108 | 112 | 116 | 120 |    |
| 88  | 92 | 96 | 100 | 104 | 108 | 112 | 116 | 120 | 124 | 128 | 132 | 136 | 140 | 144 |    |
| TALLA NORVIL Norvil size                        |    |    |     |     |     |     |     |     |     |     |     |     |     |     |    |
| XS  | S  | S  | M   | M   | L   | L   | XL  | XL  | 2XL | 2XL | 3XL | 3XL | 4XL | 4XL |    |
|   |    |    |     |     |     |     |     |     |     |     |     |     |     |     |    |
| TALLAS INTERNACIONALES International sizes      |    |    |     |     |     |     |     |     |     |     |     |     |     |     |    |
| UK · IRL  | 8  | 10 | 12  | 14  | 16  | 18  | 20  | 22  | 24  | 26  | 28  | 30  | 32  | 34  | 36 |
| Holland · Germany<br>Switzerland<br>Scandinavia | 34 | 36 | 38  | 40  | 42  | 44  | 46  | 48  | 50  | 52  | 54  | 56  | 58  | 60  | 62 |
| France · Portugal                               | 36 | 38 | 40  | 42  | 44  | 46  | 48  | 50  | 52  | 54  | 56  | 58  | 60  | 62  | 64 |
| Italia  | 40 | 42 | 44  | 46  | 48  | 50  | 52  | 54  | 56  | 58  | 60  | 62  | 64  | 66  | 68 |



MUJER WOMAN



# S4

### MEDIDAS ANATÓMICAS Anatomic measurements

**A** PECHO cm  
Chest

**B** CINTURA cm  
Waist

**C** CADERA cm  
Hip

|    |    |    |     |     |     |     |     |     |     |     |     |     |     |     |
|----|----|----|-----|-----|-----|-----|-----|-----|-----|-----|-----|-----|-----|-----|
| 82 | 86 | 90 | 93  | 96  | 101 | 106 | 110 | 114 | 118 | 122 | 126 | 130 | 134 | 138 |
| 64 | 68 | 72 | 76  | 80  | 86  | 92  | 95  | 98  | 102 | 106 | 110 | 114 | 118 | 124 |
| 88 | 92 | 96 | 100 | 104 | 112 | 116 | 119 | 122 | 126 | 130 | 134 | 138 | 142 | 146 |

### TALLA NORVIL Norvil size

|    |   |   |   |   |    |    |     |     |     |     |     |     |     |     |
|----|---|---|---|---|----|----|-----|-----|-----|-----|-----|-----|-----|-----|
| XS | S | M | L | L | XL | XL | 2XL | 2XL | 3XL | 3XL | 4XL | 4XL | 5XL | 5XL |
|----|---|---|---|---|----|----|-----|-----|-----|-----|-----|-----|-----|-----|

# S5

### MEDIDAS ANATÓMICAS Anatomic measurements

**A** PECHO cm  
Chest

**B** CINTURA cm  
Waist

**C** CADERA cm  
Hip

|    |    |    |     |     |     |     |     |     |     |     |     |     |     |     |
|----|----|----|-----|-----|-----|-----|-----|-----|-----|-----|-----|-----|-----|-----|
| 82 | 86 | 90 | 94  | 98  | 102 | 106 | 110 | 114 | 118 | 122 | 126 | 130 | 134 | 138 |
| 64 | 68 | 72 | 76  | 80  | 84  | 88  | 92  | 96  | 100 | 104 | 108 | 112 | 116 | 120 |
| 88 | 92 | 96 | 100 | 104 | 108 | 112 | 116 | 120 | 124 | 128 | 132 | 136 | 140 | 144 |

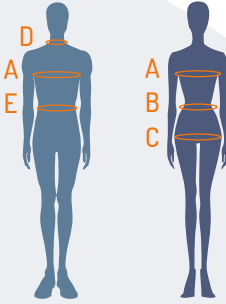
### TALLA NORVIL Norvil size

|   |   |   |   |   |   |   |   |   |    |    |    |    |    |    |
|---|---|---|---|---|---|---|---|---|----|----|----|----|----|----|
| 0 | 2 | 2 | 4 | 4 | 6 | 6 | 8 | 8 | 10 | 10 | 12 | 12 | 14 | 14 |
|---|---|---|---|---|---|---|---|---|----|----|----|----|----|----|

### TALLAS INTERNACIONALES International sizes

|   |    |    |    |    |    |    |    |    |    |    |    |    |    |    |    |
|---|----|----|----|----|----|----|----|----|----|----|----|----|----|----|----|
| UK · IRL  | 8  | 10 | 12 | 14 | 16 | 18 | 20 | 22 | 24 | 26 | 28 | 30 | 32 | 34 | 36 |
| Holland · Germany<br>Switzerland<br>Scandinavia | 34 | 36 | 38 | 40 | 42 | 44 | 46 | 48 | 50 | 52 | 54 | 56 | 58 | 60 | 62 |
| France · Portugal                               | 36 | 38 | 40 | 42 | 44 | 46 | 48 | 50 | 52 | 54 | 56 | 58 | 60 | 62 | 64 |
| Italia  | 40 | 42 | 44 | 46 | 48 | 50 | 52 | 54 | 56 | 58 | 60 | 62 | 64 | 66 | 68 |





UNISEX UNISEX



## S6

### MEDIDAS ANATÓMICAS Anatomic measurements

**D CUELLO cm**  
Neck  
**A PECHO cm**  
Chest

|    |    |    |    |    |    |     |     |     |     |     |     |     |     |     |     |     |     |     |
|----|----|----|----|----|----|-----|-----|-----|-----|-----|-----|-----|-----|-----|-----|-----|-----|-----|
| 34 | 35 | 36 | 37 | 38 | 39 | 40  | 41  | 42  | 43  | 44  | 45  | 46  | 47  | 48  | 49  | 50  | 51  | 52  |
| 76 | 80 | 84 | 88 | 92 | 96 | 100 | 104 | 108 | 112 | 116 | 120 | 124 | 128 | 132 | 136 | 140 | 144 | 148 |

### TALLA NORVIL Norvil size

|    |    |   |   |   |   |   |   |    |    |     |     |     |     |     |     |     |     |     |
|----|----|---|---|---|---|---|---|----|----|-----|-----|-----|-----|-----|-----|-----|-----|-----|
| XS | XS | S | S | M | M | L | L | XL | XL | 2XL | 2XL | 3XL | 4XL | 4XL | 5XL | 5XL | 6XL | 6XL |
|----|----|---|---|---|---|---|---|----|----|-----|-----|-----|-----|-----|-----|-----|-----|-----|

## S7

### MEDIDAS ANATÓMICAS Anatomic measurements

**A PECHO cm**  
Chest

|    |    |    |    |    |    |     |     |     |     |     |     |     |     |     |     |     |     |     |
|----|----|----|----|----|----|-----|-----|-----|-----|-----|-----|-----|-----|-----|-----|-----|-----|-----|
| 76 | 80 | 84 | 88 | 92 | 96 | 100 | 104 | 108 | 112 | 116 | 120 | 124 | 128 | 132 | 136 | 140 | 144 | 148 |
|----|----|----|----|----|----|-----|-----|-----|-----|-----|-----|-----|-----|-----|-----|-----|-----|-----|

### TALLA NORVIL Norvil size

|    |    |   |   |   |   |   |   |    |    |     |     |     |     |     |     |     |     |     |
|----|----|---|---|---|---|---|---|----|----|-----|-----|-----|-----|-----|-----|-----|-----|-----|
| XS | XS | S | S | M | M | L | L | XL | XL | 2XL | 2XL | 3XL | 3XL | 4XL | 4XL | 5XL | 5XL | 6XL |
|----|----|---|---|---|---|---|---|----|----|-----|-----|-----|-----|-----|-----|-----|-----|-----|

## S8

### MEDIDAS ANATÓMICAS Anatomic measurements

**B CINTURA MUJER cm**  
Women's waist  
**C CADERA MUJER cm**  
Women's hip  
**E CINTURA HOMBRE cm**  
Men's waist

|    |    |    |    |     |     |     |     |     |     |     |     |     |     |     |     |     |     |     |
|----|----|----|----|-----|-----|-----|-----|-----|-----|-----|-----|-----|-----|-----|-----|-----|-----|-----|
| 60 | 64 | 68 | 72 | 76  | 80  | 84  | 88  | 92  | 96  | 100 | 104 | 108 | 112 | 116 | 120 | 124 | 128 | 132 |
| 84 | 88 | 92 | 96 | 100 | 104 | 108 | 112 | 116 | 120 | 124 | 128 | 132 | 136 | 140 | 144 | 148 | 152 | 156 |
| 68 | 72 | 76 | 80 | 84  | 88  | 92  | 96  | 100 | 104 | 108 | 112 | 116 | 120 | 124 | 128 | 132 | 136 | 140 |

### TALLA NORVIL Norvil size

|    |    |   |   |   |   |   |   |    |    |     |     |     |     |     |     |     |     |     |
|----|----|---|---|---|---|---|---|----|----|-----|-----|-----|-----|-----|-----|-----|-----|-----|
| XS | XS | S | S | M | M | L | L | XL | XL | 2XL | 2XL | 3XL | 3XL | 4XL | 4XL | 5XL | 5XL | 6XL |
|----|----|---|---|---|---|---|---|----|----|-----|-----|-----|-----|-----|-----|-----|-----|-----|

### TALLAS INTERNACIONALES International sizes

UK · IRL · France · Portugal · Italia

|    |    |   |   |   |   |   |   |    |    |     |     |     |     |     |     |     |     |     |
|----|----|---|---|---|---|---|---|----|----|-----|-----|-----|-----|-----|-----|-----|-----|-----|
| XS | XS | S | S | M | M | L | L | XL | XL | 2XL | 2XL | 3XL | 3XL | 4XL | 4XL | 5XL | 5XL | 6XL |
|----|----|---|---|---|---|---|---|----|----|-----|-----|-----|-----|-----|-----|-----|-----|-----|

Switzerland  
Scandinavia

|     |     |    |    |   |   |   |   |   |   |    |    |     |     |     |     |     |     |     |
|-----|-----|----|----|---|---|---|---|---|---|----|----|-----|-----|-----|-----|-----|-----|-----|
| 2XS | 2XS | XS | XS | S | S | M | M | L | L | XL | XL | 2XL | 2XL | 3XL | 3XL | 4XL | 4XL | 5XL |
|-----|-----|----|----|---|---|---|---|---|---|----|----|-----|-----|-----|-----|-----|-----|-----|